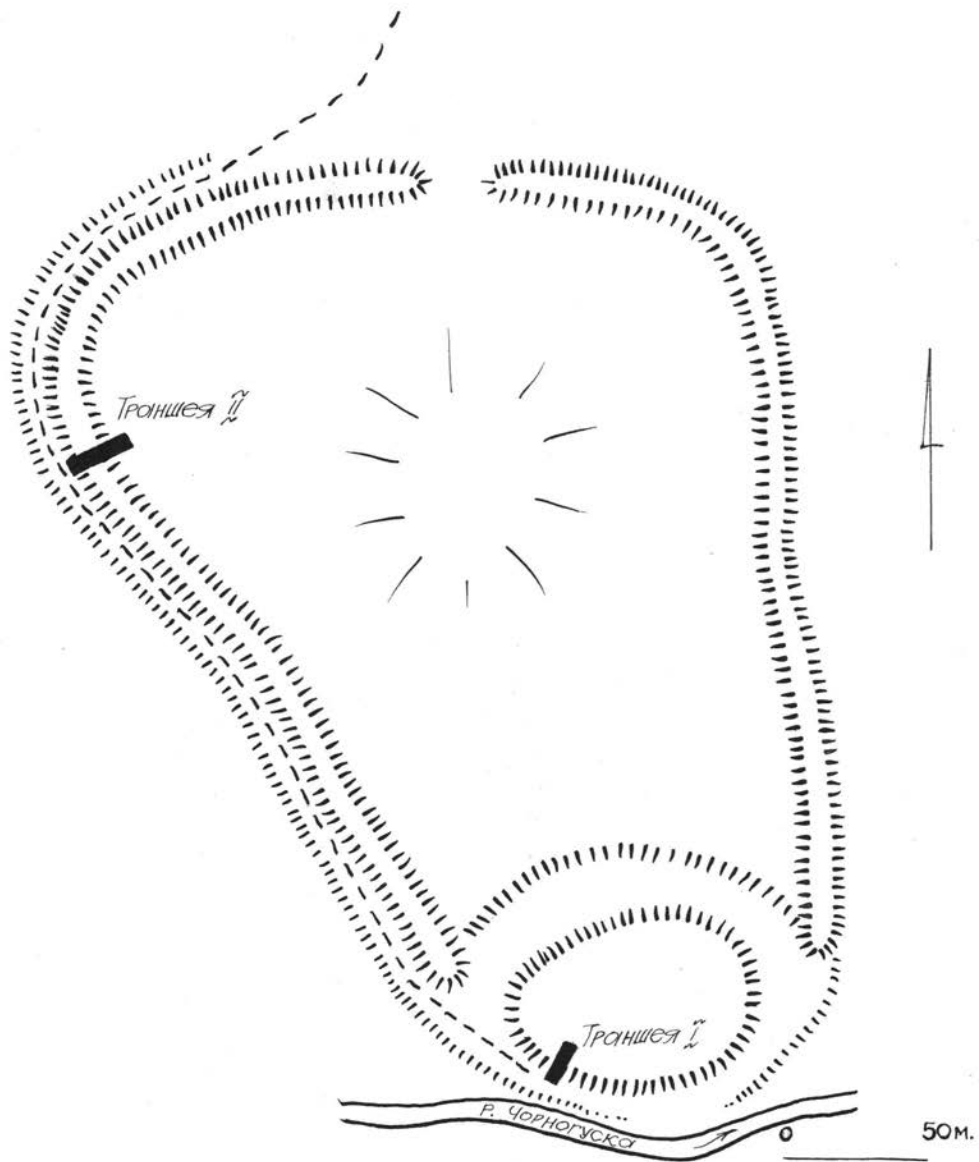


2012. .16. .205-215.

"MOTTE AND BAILEY"



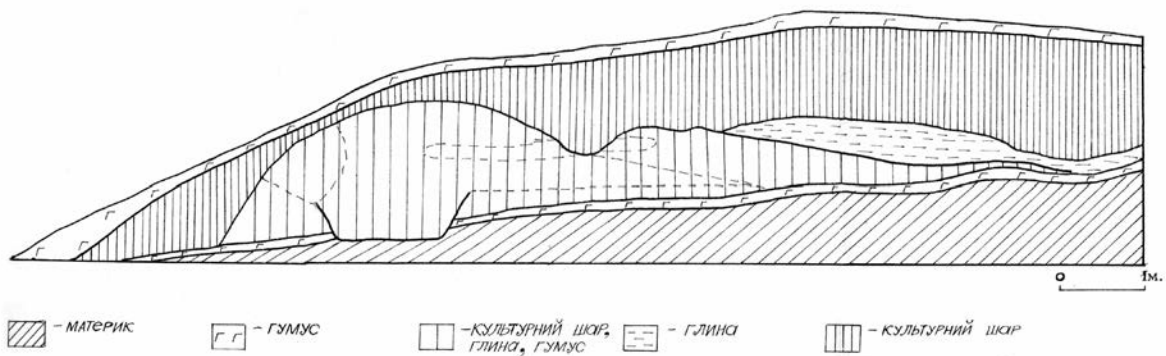
1.
Fig. 1. Scheme of Korshiv hill-fort.

XIII–XIV

(“ ”).
- ” [, 1999, . 185].
1452 .

“motte and bailey”

“ ” [, 1996]



. 2. “motte”
Fig. 2. Longitudinal section of “motte” of the Korshiv hill-fort.

“motte and bailey”

X
XI

“Motte” –

– “bailey”,



Fig. 3. “Motte” of the hill-fort in Gorodyshe I.

“motte and bailey”

“motte and bailey”.

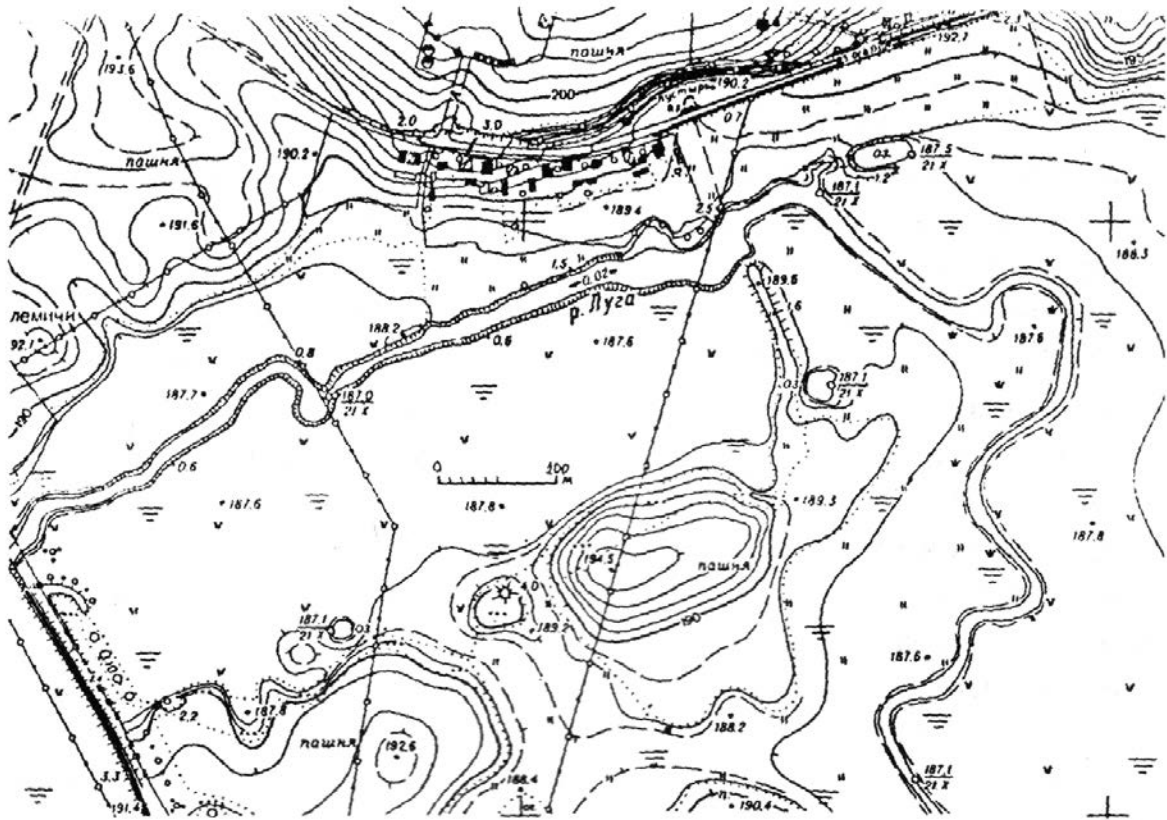
X–XIII

1980-

1970-

[Marcinsak-Kaizer, 2011].

()
XIII XVII
XIII-XV "motte"



4.
Fig. 4. Scheme of the hill-fort in Falemychi.

XIV [2011].
XIV [2011 , . 335].
[, 2009]

0,9

5

50×65 (.1).
 - (.2).
 XI .
 2,5 .
 .70].
 2012],
 I
 65,0×60,0
 5 (.3)
 15×1 ,
 2 .
 3 0,5 .
 (.1)
 V .
 5-6
 1 .
 XVI-XVIII .
 45×50 .
 1

... XVI ... [... , 2003].
... “ ” ...
... “ ” ...
... 50 ...
5-6 ...
... XIII ...
XIX ... [... , 2007]. ... “ ” ...
150x50 ...



Fig. 5. “Motte” of the hill-fort in Falemychi.

... 5. “Motte” ...
“ ” ...
90-100 ...
... XIII ... [... , 2002, . 31, . 13].
I

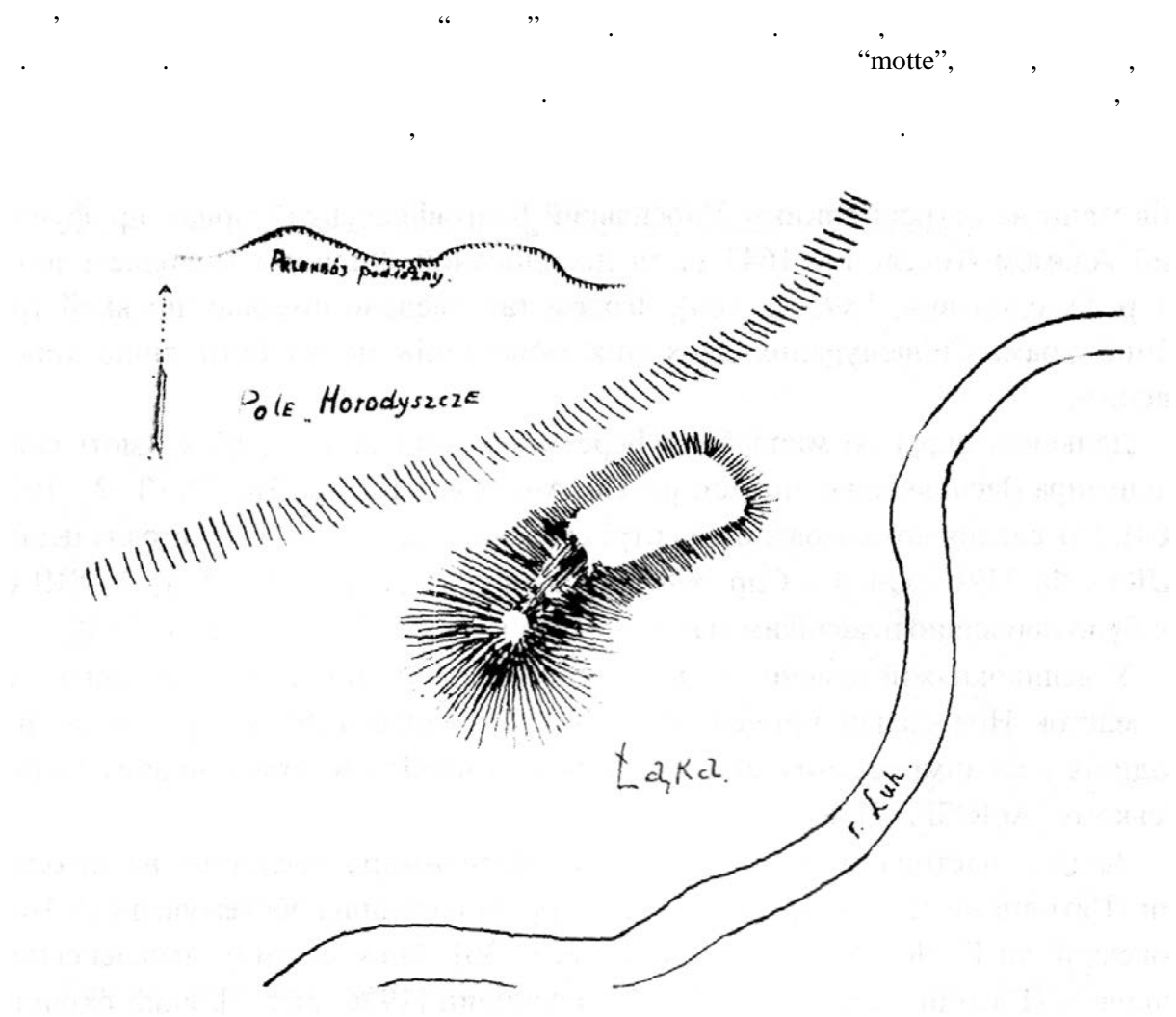


Fig. 6. Scheme of the hill-fort in P'yatydni.

XI [, 2009, . 70].

I. -
150x50

(,)

"ringwork"
[Kenyon, 1990, . 28-31].

"bailey",
5

"bailey"

"motte and bailey"

"motte and bailey".
"motte and bailey",

[, 2010, . 109, . 58, 59].
" " (. 4, 5)

130×50 (1,5)

40

8

XII-XVIII

1157

XII-XVIII

“motte and bailey”

XIV-XV

XII-XIII

XVI-XVII

(. 6, 7).

. 115, . 62].

[, 2010,

5-7

45×20

20

8

2

“motte and bailey”

I

“motte and bailey”



Fig. 7. “Motte” of the hill-fort in Pyatydni.

XIII–XIV [, 2001].

[Plemi ta, 1985].

“motte and bailey”

XIII

“ ”

“ ”

[, 1967, . 204].

(bergfried),

“ ” [, 2001].

2012 VI I //
: ”: 3 .- .1.- .11-13.

1999 VIII-XIII .- .-252 .

1996 ’.- : .-207 .

2001 “ ” (donjon)
// .- .- .5.- .54-67.

2001 // .- 10.- .80-89.
2009 // .- 13.- .67-73.

2011 .- .- .VII.- .323-327. //

2011 // .- .15.- .329-337.

2003 ’.- .182-189. - . // .-

1967 X-XIV . // .- .- 140.-241 .

2002 - .- .-108 .
2010 .- .-320 .

2007 ’ // - : - -
. - .30-31.

Kenyon John R.
1990 Medieval Fortifications. – London. – 233 p.

Kola A.
1991 Grody ziemi chełmińskiej w późnym średniowieczu. – Toruń. – 248 s.

Marcinsak-Kaizer A.
2011 średniowieczny dwór rycerski w Polsce. Wizerunek archeologiczny. – Łódź. – 511 s.

Plemińska A.
1985 średniowieczny gródek w ziemi chełmińskiej / Pod red. A. Nadolskiego. – Warszawa–Poznań – Toruń. – 209 s.

Sergij PANYSHKO

FOTRESSES “MOTTE AND BAILEY”
AS THE FIRST KNIGHTS’ FOTRESS YARDS IN VOLHYNIA

The article describes the hill-fort of “motte and bailey” type, known as conical ones, in villages Korshiv, Gorodyshche I, Falemychi, P’yatydni and some other localities, which might be considered as the oldest knights’ hill-fort in the region. The idea of building up that type of fortresses came to Volyn from Europe in XIV century.