

2004-2010

2000-2008

2007-2008

2008-2009

10; , 5; (. , 1/9; , 11; , 1/3; , 1/2; ; ' , 8, , 5; , 5 ; . , 2/1; , 16 ; - . , 2; . , 5 ; . , 2/1; . , 6/1; . , 17 ; , 3/7, 3/8, 3/9 3/10; . , 8 ; , 2010 . , 2/2; . , 4; . , 3/3; . , 7/2, 7/3, 7/5; , 6) " , "

V - , 22

V . 1672 .

150-

1941 .

1944 .,

, 11

, 1/3

. 3722, . 5, 6].

[" , ", , 81/1,

, 1/2

...
 (,
). [“ ’ ”, , 81/6, . 3720,
 .5, 6].



. 1. . 4.
 Fig. 1. General view at the house at Virmenskyi rynok square, 4.

() ,
 . [“ ’ ”, , 81/10, . 3724,
 .4, 6].

, 8 :
 , 10
 (, 8).
 , 10
 [“ ’ ”, ,
 81/9, . 3723, .6, 7].

(, 5 5) ,

0,5

“ ”, 81/3, . 3717, . 5, 6].

0,3 , 16

[“ ”, 81/7, . 3721, . 4, 5].

(- , 2)

. 3729, . 4, 5]. [“ ”, ; 81/15, . 5

11,1, - 0,7 . : - 12,3, -

. 5, 6]. [“ ”, , 81/14, . 3728, . 2/1

() - 15,5 ; () - 6 , - 0,6 .

[“ ”, , 81/11, . 3725, . 5, 6]. 6/1.

“ ”, 81/13, . 3727 . 5, 6]. , 3/7, 3/8, 3/9, 3/10 VII-XIX , 1,0-1,8 2,0-2,5 .

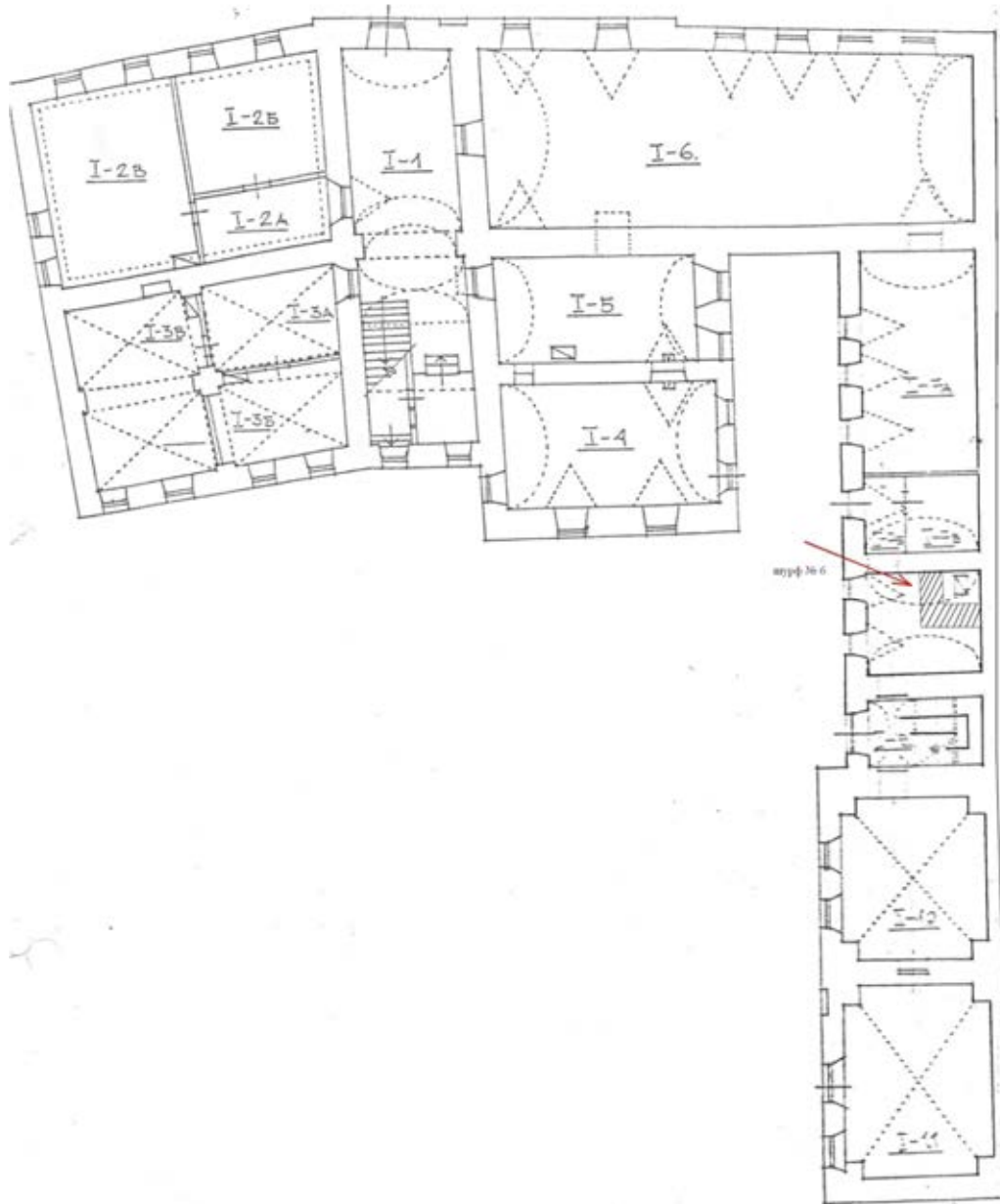


Fig. 2. Survey pit 6 at the plane of house.

“ ”, 81/1, . 3715 .7, 8].

, 8-

; ’ 122-

() ,

50



Fig. 3. View at survey pit 6: northern wall; view from above.

3. ; 6: ;
 : 0,9–1,2 [“ ’ ”, – 29 ; 16,5 / – 8,5; 6,3 .
 , 81/15, . 3719 . 4, 5].
 , 3/3
 –
 , , ,
 , – [“ ’ ”,
 , 81/19, . 5, 6].
 2008 .
 , 7/2, 7/3, 7/4, 7/5.
 4 3
 ,
 7/5,
 7/5 7/4 ,
 7/3.
 7/3
 7 () ,

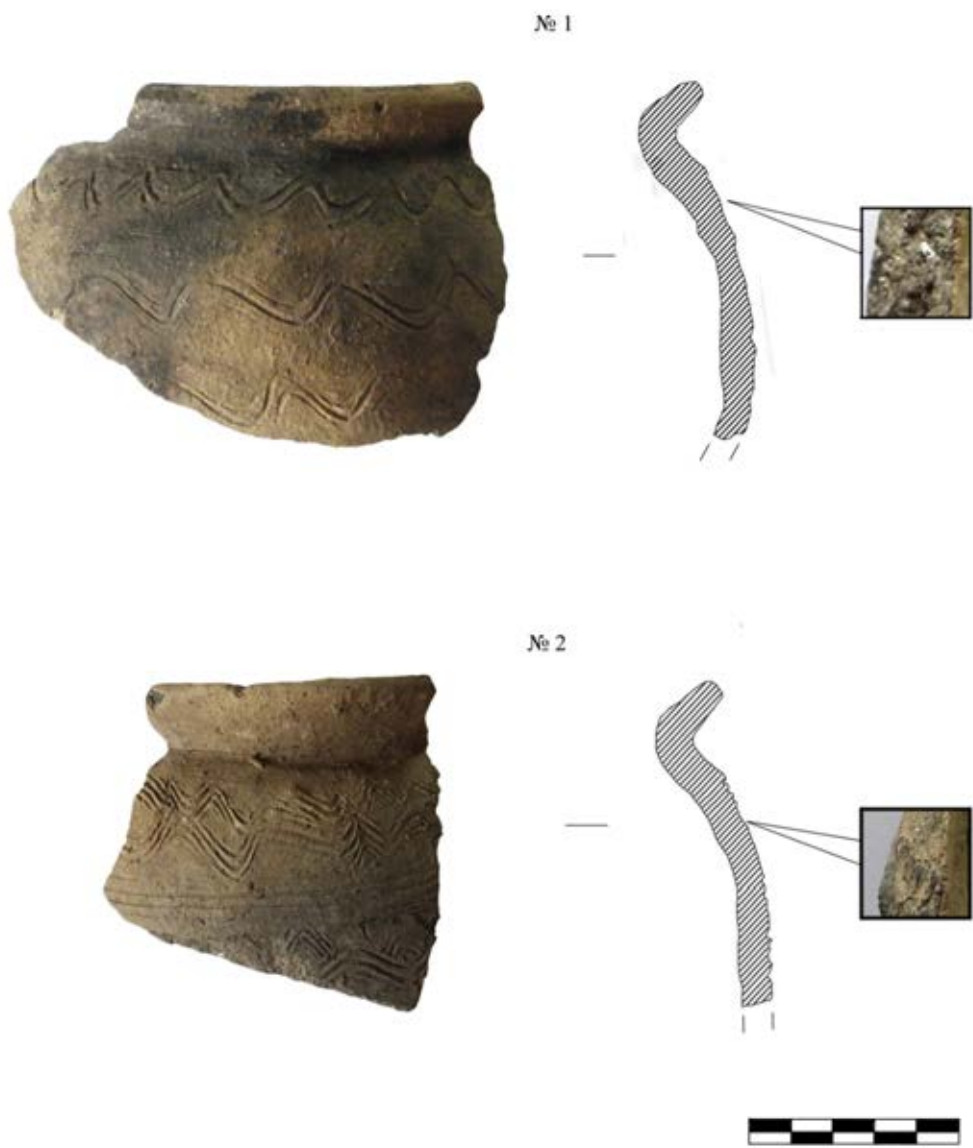


Fig. 4. Ceramic ware from survey pit 6.

, 7/2.
 (, 7/2)
 [“ ” , 3726,
 , 6.
 0,7–0,9
 (,)
 , 0,5

).

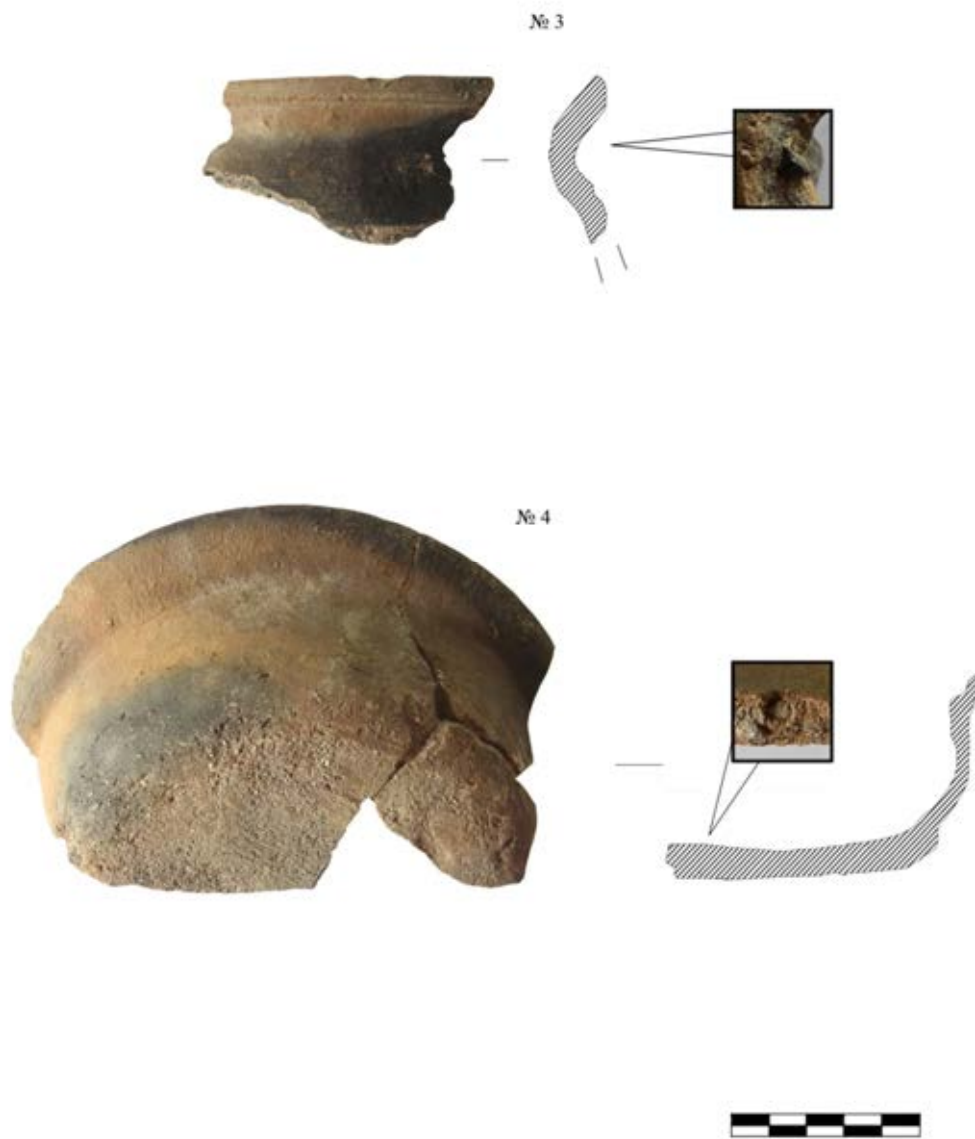


Fig. 5. Ceramic ware from survey pit 6.

[“ ’ ”, (81/4, . 3718 . 5, 6).]

2008 .
 9 . (70 , h 250
 (726), , 40; 110;
 75 , h 180 (727); VII . (, ,
) (730). ,9(,5) V -X .
 2008 . ,
 XVII .(728). ,
 “ ” .
 2007 . -
 (.) . , XVIII .
 2007 . - .
 (.) .
 600 . IV-III . . ,
 2008 . [,
 , 2008] 3028 ,
 (. . . .) . , -
 - 2010 . * ,
 629 30- . ,
 “ ” . , -
 09.12.2008 . [, , 2010, . 3]. 2009 .
 - , 15, 15 ,
 ,4. ,4. XVII .
 , 15, 15 .
 V ,
 1,00-1,30 , - 0,6-0,8
 5
 [, 2010].
 2010 . “ ”
 375) [, 2010, 2011], (-
 , .
 , 23 2009 . 17:00
 - (V ., . 1642).

*

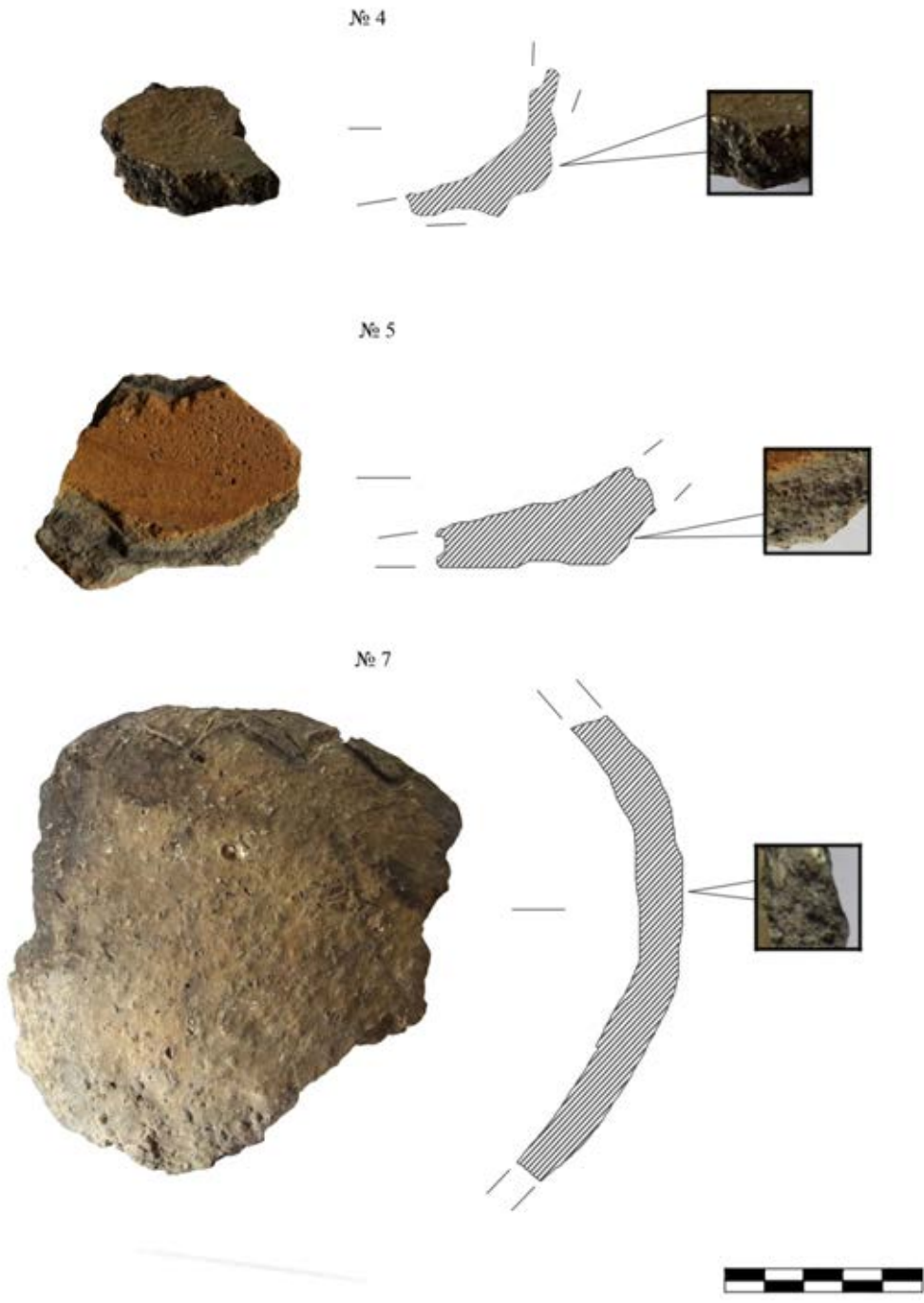


Fig. 6. Ceramic ware from survey pit 6. 2009 . 2011 .

“ , ” .

VII .

V – 56 [“ ’ ”; 81/13, . 3756]. 2010–2011 888 “ ’ ” 1991–1999 (, , 19). XVII–XX . 2009 . “ ” . ,4 (. 1645) 30- . XX . XIX . XVII–XVIII . (1). 1807–1809 , , 1834 . 30- –60- XIX . 1832 1925 , , 1806–1832 , 1832 . , , 1806–1809 . 30–60 , XIX . [“ ’ ”, , 73/104] (. 1). 30- 6, (. 2). 2,5×2 (5²) 1,35 . 3 : 1. , 0,25 . 2. - 0,55 , 0,25–0,30 . 3. 0,75 . , 0,25–0,35 , 4. , 1,05–1,15 0,15–0,20 (. 3). , 0,8–0,9 , 0,2 . ; () – 1 ; – 5 ; – 2 ; (4). ;

1 (.4) 19 13-15

4

20-30 (2-4) :

2 (.4).

(3-4

3 (.5) 17 - 10-13

4 (.5)

110 85 60

1, 2. 1,5 5 6 (.6)

1 2. 7 (.6) ()

1. [, 1992, . 173-174].

2. 1 2 14 [, 2005]. 3 [, 1992, . 49-56].

3. [, 1992, . 173-174].

4. [, 2005, . 22-23].

5. [, 1998, . 160-162].

6. -1 - -2 (). [, 1982].

7. [, 1992; , 1992; , 1991].

8. [, 1982; , 1992; , 1991].

1992 - // /
. 21-35.

1982 34-36.

2008
. 15 ' V -
. 15 ' V „
. 1.- 3.

1998 // -
(.) .- .- . 160-162.

2005 - III .- .- . 31-33.

2009 “ ”.
. (. -
2-08 1.09.2008). :
20.09.2008-31.10.2008 .- 15 .

2010
. 15 ' V -
. 15 ' V „
. 1.- 383-394.

2011 15, 15 //
. (18-19 2010). -
. 173-181.

2012
2010 : :
. / -
. 383-394.
. “ ” :
81/8 . 3722 - . ' - ,2009. - . 19.
81/6 . 3720 - . ' - ,2008. - . 12.
81/10 . 3724 - . ' - ,2008. - . 11.
81/9 . 3723 - . ' - ,2008. - . 15.
81/3 . 3717 - . ' - ,2008. - . 11.
81/7 . 3721 - . ' - ,2008. - . 8.
81/15 . 3729 - . ' - ,2008. - . 13.
81/14. . 3728 - . ' - ,2008. - . 10.
81/11 . 3725 - . ' - ,2009. - . 8.
81/13 . 3727 - . ' - ,2008. - . 14.
81/1. . 3715 - . ' - ,2009. - . 17.
81/15. . 3719 - . ' - ,2008. - . 12.
81/19 . 37 - . ' - ,2008. - . 17.

	81/19	.	3726 –	.	'	-		,	2008. –	. 25.
	81/4	.	3718 –	.	'	-		,	2008. –	. 16.
1982								//		. – 39. – . –
										. 54–57.
2005										– . – . 50–73.
1992								//	/
										. – . – . 7–20.
1991										. – . – . 5–7.
1956										. – . – 55. – . 238.
1992								//	/
										. – . 173–174.

Dmytro SHEVCHENKO,
Ruslan NAGNYBIDA

NEW ARCHEOLOGICAL MATERIALS ACCORDING TO THE ARCHITECTURAL-
ARCHEOLOGICAL OVERSIGHTING AND RESEARCHING IN 2004–2010 ON THE
TERRITORY OF THE NHAR OF “KAMYANETS”

The history of Kamyanets-Podilsky demands a great amount of scrupulous investigations, so that the archeologists are taking the greatest part in it.

The article includes short characteristic of the basement fragments and archeological ceramics, which were exposed while architectural-archeological oversighting and researching on the territory of preserved area within 2004–2010. Then in 2009, on well-known Virmenski Rynok square, 4 an unique ceramic complex was found and analyzed in the deepest details.

Taking everything into account, we can suppose the settlement existence from the middle of the X century, when the town of Polians – Kyiv – become an announced metropolis of the united Russ.