

УДК (UDC) 911.375.5 (477.52)

DOI: [https://doi.org/10.33782/eminak2023.2\(42\).648](https://doi.org/10.33782/eminak2023.2(42).648)

ARCHAEOLOGICAL SIGHTS OF OLESHNIA DISTRICT (BASED ON THE MATERIALS OF BORIS BATURYN'S LAND MAP OF 1724)

Evgenij Osadchij¹, Sergey Degtyarev²

¹ Institute of Applied Physics of the National Academy of Sciences of Ukraine (Sumy, Ukraine)
e-mail: osadchij.75@gmail.com; ORCID: <https://orcid.org/0000-0002-9143-110X>

² Sumy State University (Sumy, Ukraine); Cherkas Global University (Washington, USA)
e-mail: s.degtyarev@yur.sumdu.edu.ua; ORCID: <https://orcid.org/0000-0002-0885-2721>

ABSTRACT

The purpose of the article. The article aims to analyse archeological monuments depicted on a little-known cartographic source – the land map of the Oleshnya district of the first half of the 18th century.

Scientific novelty. A 1724 land map authored by geodesist Borys Baturyn is introduced into scientific circulation. It depicts the Oleshnya District as of the first third of the 18th century. The map contains images of administrative boundaries and settlements. However, in our opinion, the image of two hillforts of the Ancient Rus era and an ancient rampart is the most interesting. On the map, it runs from the Kukuyeve hillfort to the village of Stanova in the upper reaches of the Buimer.

Conclusions. The studied map is one of the series of “Partied el’Ukraine”, which were compiled by geodetic surveyors from 1721 to 1725. The map is a little-known but quite informative source for the location and names of settlements in the district, as well as archaeological monuments. It is the result of several years of work by two cartographers – Borys Baturyn and Ivan Khrushchev, who worked in several districts located in the territory of the modern Sumy region.

The two hillforts pictured on the map were well-known landmarks at the time, mentioned in administrative documents of the second half of the 17th century. The greatest attention was paid to the localization and definition of the third archaeological object, which was drawn during the compilation of the map. This is an ancient rampart that has not been discovered so far and is mentioned only in this source. The authors assume its emergence on the map.

Keywords: land map, hillfort, human settlements, city, urbanization, ancient rampart, Oleshnya district, 18th century

АРХЕОЛОГІЧНІ ПАМ'ЯТКИ ОЛЕШНЯНСЬКОГО ПОВІТУ (ЗА МАТЕРІАЛАМИ ЛАНДКАРТИ БОРИСА БАТУРИНА 1724 Р.)

Євген Осадчий¹, Сергій Дегтярьов²

¹ Інститут прикладної фізики Національної академії наук України (Суми, Україна)
e-mail: osadchij.75@gmail.com; ORCID: <https://orcid.org/0000-0002-9143-110X>

² Сумський державний університет (Суми, Україна);
Черкас глобальний університет (Вашингтон, США)
e-mail: s.degyarev@yur.sumdu.edu.ua; ORCID: <https://orcid.org/0000-0002-0885-2721>

АНОТАЦІЯ

Мета статті. Стаття присвячена аналізу пам'яток археології, зображених на маловідомому картографічному джерелі – ландкарті Олешнянського повіту першої половини XVIII ст.

Наукова новизна. До наукового обігу вводиться ландкарта 1724 р. авторства геодезиста Бориса Батурина. На ній зображено Олешнянський повіт станом на першу третину XVIII ст. Карта містить зображення адміністративних меж і населених пунктів, але найбільшу цікавість, на наш погляд, являє зображення двох городищ давньоруського часу та стародавнього валу, який на карті проходив від Кукуєвого городища до с. Станова у верхів'ях Буймера.

Висновки. Досліджувана ландкарта є однією з серії «Partied el'Ukraine», які склалися геодезистами з 1721 по 1725 роки. Карта є маловідомим, але досить інформативним джерелом щодо розташування та назв населених пунктів повіту, а також пам'яток археології. Вона є результатом кількарічної роботи двох картографів – Бориса Батурина та Івана Хрущова, які працювали на території кількох повітів, розташованих на території сучасної Сумської області.

Два зображених на карті городища були відомими на той час пам'ятками, згадуваними в адміністративних документах другої половини XVII ст. Найбільшої уваги приділено локалізації та визначенню третього археологічного об'єкта, який було нанесено при складанні карти. Це стародавній вал, який на сьогодні не виявлений, а згадки про нього є тільки у цьому джерелі. Авторами висловлюється припущення щодо його появи на ландкарті.

Ключові слова: ландкарта, городище, людські поселення, місто, урбанізація, стародавній вал, Олешнянський повіт, XVIII століття

INTRODUCTION

The cartographic heritage of Ukraine is quite significant and has a long history. The first images of Ukrainian lands were pictured on ancient maps, and throughout the early modern period they were regularly displayed on pan-European and Polish-Lithuanian Commonwealth maps. Though, due to military and political events, it was scattered in the archives and libraries of other countries. A significant part of the maps depicting Ukrainian territories is kept in the Swedish National Archives, libraries in France, and the United States of America. But the largest collection of such maps, unfortunately, is kept in the archives of the Russian Federation. Such maps mainly pictured the river system and the most significant settlements.

With the development of cartography in the territory of the Polish-Lithuanian Commonwealth, there appeared drawings on which archaeological sites were marked. They were mainly hillforts and mounds. The most vivid example is the map of the French military engineer in the service of the Polish Crown H.L. de Boplan, where the fortifications of the times of Kyivan Rus are marked. The Moscow School of Cartography was significantly behind the European school. Thus, in the 17th century, the main type of map was a fixed drawing – that is, a schematic drawing of the area without the scale and proportions of the depicted objects.

In the first third of the 18th century, larger-scale mathematically based drawings began to be created. There was space and an opportunity to depict more objects and components. On the territory of the modern Sumy region, which in the second half of the 18th century was a part of the Slobozhanshchyna, the compilation of land maps of individual districts was carried out. These maps were already mathematically based and contained a more accurate representation of the terrain, which makes it possible to use them as a source for the study of archaeological sites. The study of such sources is complex and consists of office and field stages. The first, the office stage, involves studying drawing elements and comparing them with modern maps. The most complicated is the field stage, which purpose is the in-person identification and research of the depicted archaeological sites. The most famous of them – mounds and saltpeter fields – have visible traces on the surface, but the remains of the potash workshop have no external signs. Therefore, ancient maps provide significant help in their discovery. Markings of hillforts are less common. On the studied map there is an image of two earthen fortifications – Kukuyeve and Nemyrivske, located in the middle course of the Vorskla River, as well as a rampart that passed through the territory of a large forest massif on the right bank of the Vorskla River.

LITERATURE REVIEW

The map proposed for publication is stored in the manuscript fund archive of the Russian Academy of Sciences Library. This map shows the entire territory of the county as of the first half of the 17th century. The drawing is made on a 37×43 cm sheet of paper. The map is in the center slightly shifted to the right. Above, there are the old and new card numbers (A3046/422 and 422, respectively)¹. The map was drawn in a graphite pencil, then the main lines were drawn in black ink, and the frame and main elements were colored. The drawing of the topographic base is made in an orthogonal projection, except for settlements and industrial facilities, which still have images in perspective. The map has a mathematical component. At the bottom, in the right corner, there is an indication of the scale in versts, but without a scale ruler, as well as a degree grid. The meridian of 580 east longitude passes through the map. Later, a degree grid was added in pencil, passing through all the degree marks marked on the map and writing the letters from left to right from 1 to 20 and from top to bottom from 1 to 7.

In the lower right corner, there is the author's signature "Composed by surveyor Baturyn". Borys Baturyn is one of the two cartographers who in 1721 were sent to the Kyiv region to survey the area and draw land maps. Together with Ivan

¹ Александров Б.В. Описание рукописных карт XVIII в., хранящихся в Отделе рукописной книги Библиотеки Академии наук СССР // Гнучева В.Ф. Географический департамент Академии наук XVIII века. Приложение II. Москва-Ленинград, 1946, С. 307.

Khrushchev, they were the authors of the drawings of several districts on the territory of the modern Sumy region – Myropillya, Kamenivsk, Nedryhailiv, Putyvl, Okhtyrka, etc. Often, a surveyor and an apprentice assistant were sent on a business trip to divide the work, but in our case, both specialists had the appropriate specialty for both drawing plans and independent drawing of maps². The date of drawing up the map was 1724, that is, the time when surveyors worked on the territory of these districts.

The inscriptions on the map are written in civil cursive, typical for the first half of the 18th century. In individual words, one letter is often written on top, words are broken and have abbreviations. Their writing is situational and can be tied to the designation or element of the map that it describes. The numbers of the degree grid are the clearest. They are made neatly, above each, there is a mark of an angular minute.

The archaeological sites depicted on the 1724 map are well-known in scientific literature. They are mentioned in the works of Archbishop Filaret³ and D. Bagaliis⁴, who used the questionnaire method of information collection. At the end of the 1930s, the middle course of the Vorskla River was investigated by the archaeological expedition of P. Tretyakov. In particular, the excavations of the settlement in Zarichne and explorations in the territory of the Zhuravnensky archaeological complex were carried out. According to the research results, the hillforts were assigned to the Romanian Ancient Rus period⁵. At the end of the 20th and the beginning of the 21st centuries, these settlements were excavated. Thus, during the expeditions, large-scale explorations were conducted in the region while several settlements relevant to this study were discovered. O.P. Motsia made excavations of the Zhuravnensky archaeological complex, V.V. Pryimak discovered Zarichne 1 settlement, while D.S. Hrechko assisted by the author carried out reconnaissance in the upper reaches of the Sosonka River⁶. In 2019-2021, V. Zhigola and V. Skorohod carried out research on the site of Zarichne 1 hillfort. As a result, the remains of fortifications, which may date back to the 12th century, as well as several economic and residential buildings of the 10th-12th centuries⁷, were discovered.

² Гольденберг Л.А. Михаил Спиридонович Гвоздев (начало XVIII в. – после 1759 г.). Москва: Наука, 1985. С. 21; Дегтярев С.И., Кривошея Ир.Ив. Инкорпорация бунчукового товарищества в состав служебной и социальной элиты Российской империи в последней трети XVIII в. // *Vułye Gody*. 2016. № 42 (4). С. 1118-1126; Дегтярев С.И. История чиновничества Российской империи в российской историографии XIX – начала XX вв. // *Vułye Gody*. 2014. № 34 (4). С. 554-558.

³ Филарет. Историко-статистическое описание Харьковской епархии. Москва: Тип. В. Готье, 1857. Отд. III. С. 55-57, 107-108.

⁴ Багалея Д.И. Предисловие к археологической карте Харьковской губ. Объяснительный текст к археологической карте Харьковской губернии // Труды XII Археологического съезда. Т. 1. Москва: Изд. МАО, 1905. С. 1-2.

⁵ Третьяков П.М. Стародавні слов'янські городища у верхній течії р. Ворскла // Археологія. 1947. Т. I. С. 123-128.

⁶ Моця А.П., Орлов Р.С., Покас П.М. Отчёт о работе Днепровской древнерусской экспедиции в с. Журавное в 1986 г. // Науковий архів Інституту археології НАН України. Ф.е. № 22024-22027. 1986/30. С. 1-3; Приймак В.В. Путивльське удільне князівство Чернігово-Сіверщини. Полтава: Техсервіс, 2007. С. 160; Гречко Д.С., Берест Ю.М., Коротя О.В., Осадчий Є.М., Крютченко О.О. Археологічні розвідки на Сумщині у 2015 р. // Феномен Більського городища 2016. Збірник матеріалів наукової конференції. Київ-Полтава: ЦП НАН України і УТОПІК, 2016. С. 222-224.

⁷ Жигола В., Скороход В., Ситий Ю. Дослідження на Заріченському археологічному комплексі. *Археологічні дослідження в Україні 2020*. Київ: Інститут археології НАН України, 2022. С. 279-280.

This work continues a series of publications by the authors, in which maps of the early modern era are analyzed and archeological monuments are depicted on them. On the map, G.L. de Boplan analyzed the territory, which in the first half of the 17th century was located on the border of Moscovia and the Polish Crown. The hillforts depicted on it played a prominent role in the work of the Interstate Commission on Border Delineation⁸.

Previously, the map “Plan of Oleshnya Town” of the beginning of the 18th century from the Moscow Military Historical Archive was introduced into scientific circulation, which depicts a part (mainly the northern) of the Oleshnya district. In this work, a similar block of information has been analyzed. All the monuments of archeology have been localized, and the location of the destroyed monuments has also been determined. A separate analysis of the remains of the fortifications of the Oleshnya fortress of the 17th-18th centuries was carried out, which spares us from repetition⁹.

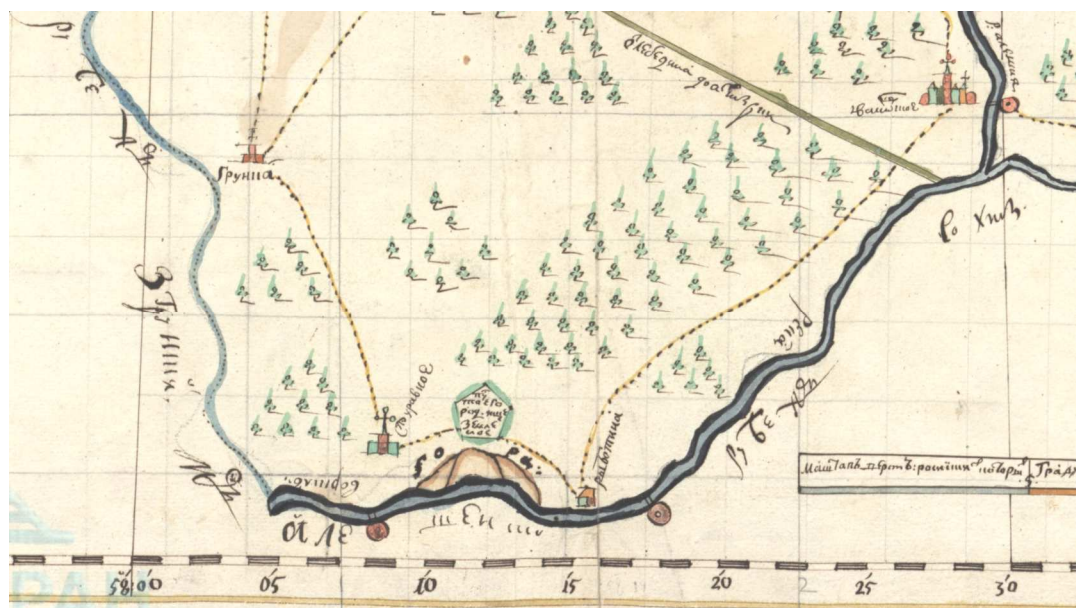


Fig. 1. Kukuzye hillfort on the map of Oleshnya District in 1724.

DISCUSSION AND RESULTS

Archaeological sites on the map have a rather specific conventional sign – a pentagon with the inscription “empty earth settlement” inside. Such an image is the largest among conventions. Its choice and design prove the importance of old earthen fortifications.

⁸ Дегтярев С.И., Осадчий Е.Н. Делимитация границы между Речью Посполитой и Московским царством в междуречье Сулы и Сейма в первой половине XVII века // *Vulye Gody*. 2022. № 17 (4). С. 1513-1522.

⁹ Осадчий Е.М. «План городу Алешни» першої половини XVIII століття // *Старожитності Лівобережного Подніпров'я – 2021: збірник наукових праць. Пам'яті І.Г. Шовкопляса (1921-1997)*. Харків-Полтава: ТОВ «Майдан», 2022. С. 161-170.

The first fortification is in the eastern part of the map and is probably the Kukuyeve hillfort (fig. 1). Its name is well-known to residents and is often found in land grant documents from the second half of the 17th century¹⁰. This hillfort is part of an archaeological complex, which consists of a fortification on a high promontory on the right bank of the Vorskla River, a settlement, and a burial mound. The hillfort is oval. On the northern plain side, it is fortified with a 6-8 m wide, 2-3 m deep ditch laid 5 m below the level of the site of the hillfort. The horseshoe-shaped rampart is 4 m high and 5 to 10 m wide. The slopes of the hillfort are steep.

The scarp is laid 10 m below the level of the site. The width of the site varies from 1 to 3 m (fig. 3a)¹¹. The settlement is located on the same cape on the north side of the hillfort. It is bounded by steep slopes on three sides, and from the northeast, there was a defence line consisting of a ditch 3 m wide and up to 1.5 m deep¹². The rampart is not visually traceable due to the numerous replanning of this part of the settlement and the construction of a cultural center on its territory. The settlement contains a powerful cultural layer full of materials from Romanian archaeological culture and Ancient Rus times. Its northern slope is destroyed by erosion caused by natural and anthropogenic factors – along there is a descent that runs to the creek. In 2002, an archaeological expedition led by V. Pryimak carried out rescue excavations on the site where the profile of a buried structure was discovered in the cliff. It was almost destroyed. Thus, it was possible to explore only one of the corners. The building belonged to the Romanian culture, was abandoned, and turned into a garbage dump. Its filling was dominated by soil saturated with ash and coal with large fragments of moulded ware.



Fig. 2. Nemyrivske hillfort and the “ancient rampart” on the map of 1724.

¹⁰ Russian State Archive of Ancient Acts. Fund 210. List 12. File 846. Page 768.

¹¹ Морзунов Ю.Ю., Приймак В.В., Осадчий Е.М., Коротя О.В. Городища роменсько-давньоруського часу Сумської області. Харків: Експрес-книга, 2022. С. 200-201.

¹² Жигола В., Скороход В., Ситий Ю. Дослідження на Заріченському археологічному комплексі... С. 279.

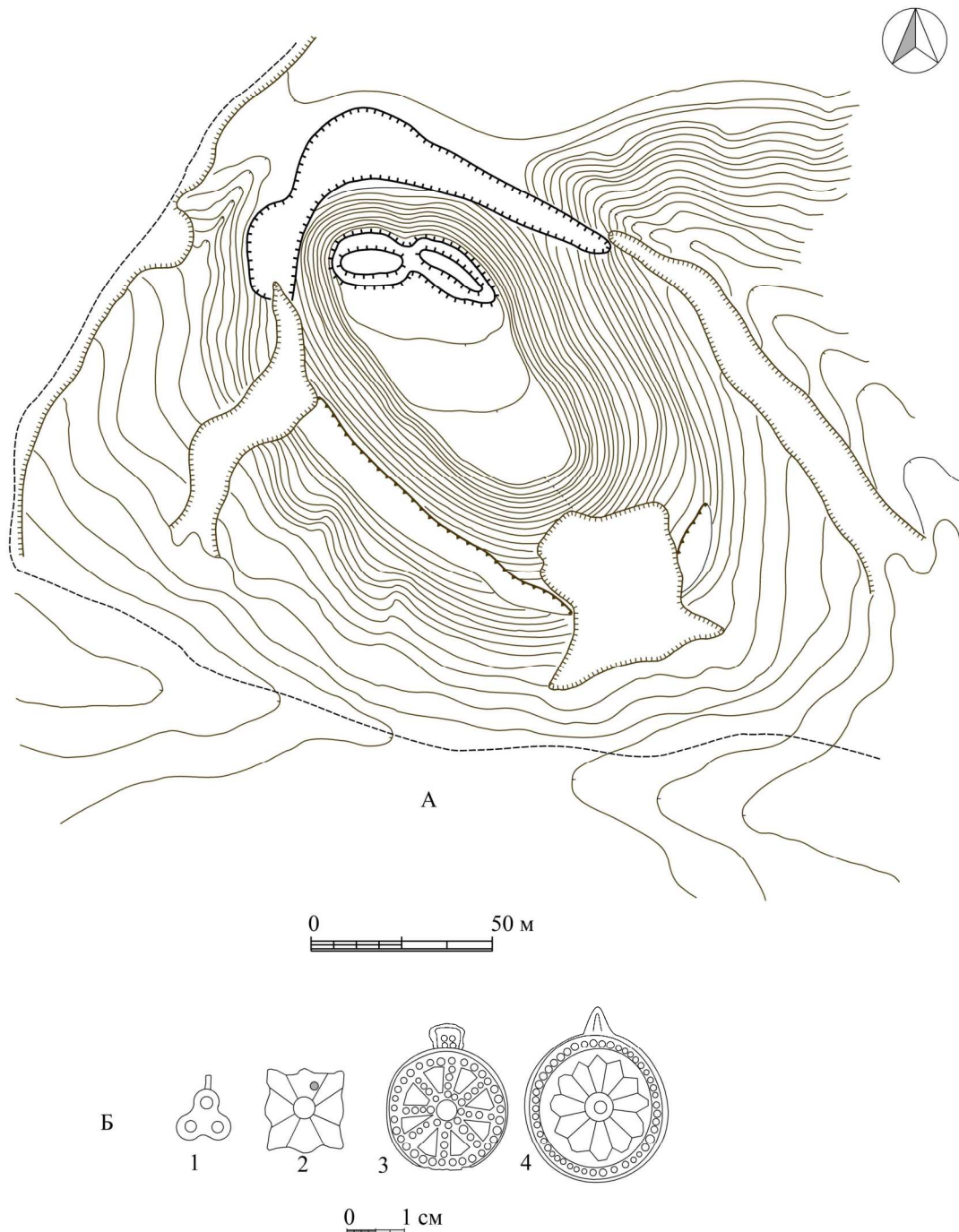


Fig. 3. Kukuyeve hillfort and finds. A – a plan of the hillfort, b – finds. 1-2 – items from the hoard in 2002 (excavations by V.V. Pryimak), 3-4 – finds from burials on the territory of the hillfort (excavations by P.M. Tretyakov in 1938).

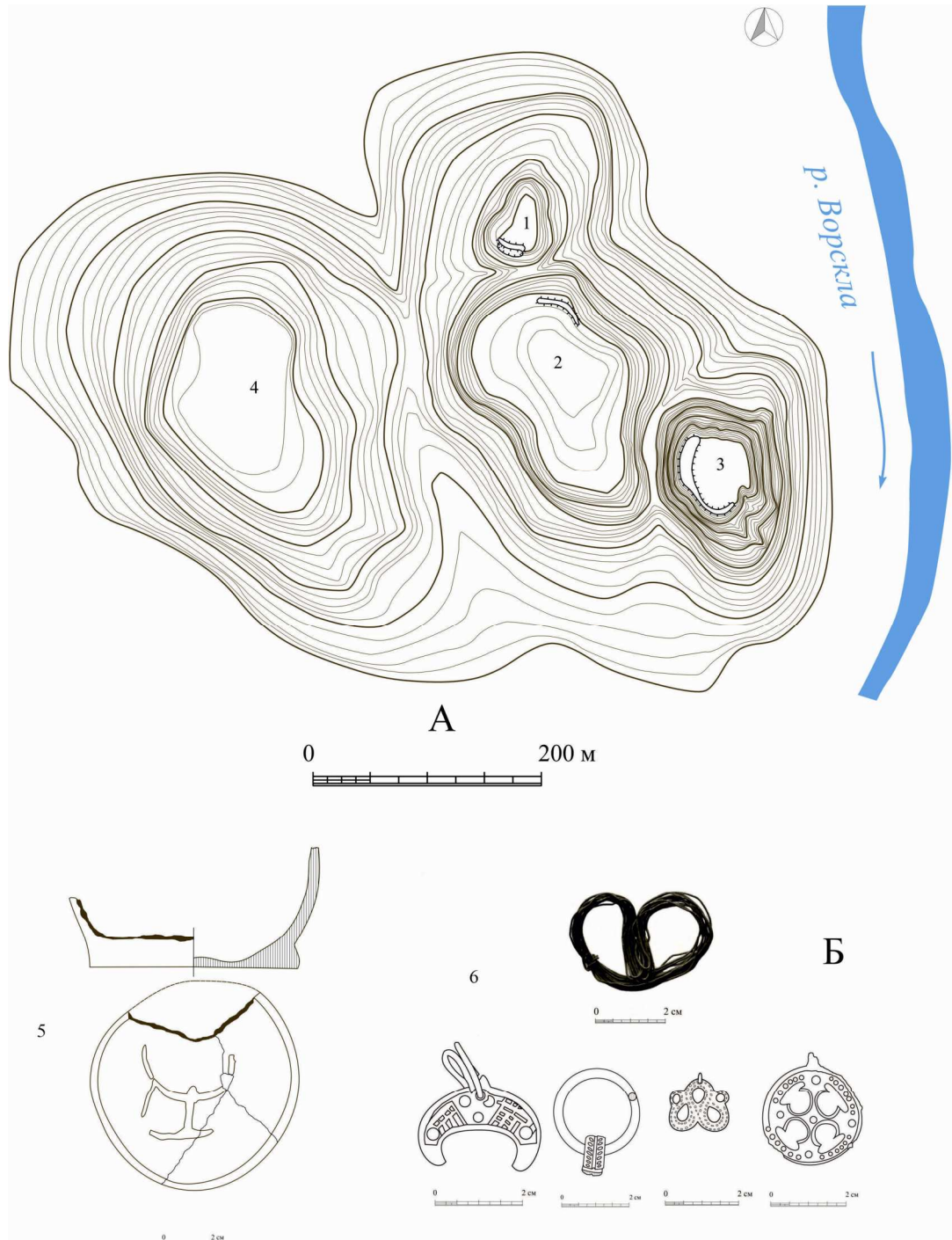


Fig. 4. Nemyrivske hillfort and finds.
 A – the plan of the settlement. 1 – stronghold, 2 – fortified settlement, 3 – “small” hillfort, 4 – unfortified settlement. B – findings. 5 – a fragment of the bottom of a pottery pot with a princely sign, 6 – random finds from the territory of the fortified post.

Among the finds, it is worth noting a bone cover for a quiver and an amulet made of a boar's claw. In the ashy filling, compactly assembled ornaments were discovered, which consisted of a series of blue and yellow beads and carnelian multifaceted. The same set included bronze pendants in the form of four and three rings, cast buttons, and a belt retinue plaque with a hole transformed into a neck ornament (fig. 3b).

This set can be dated to the first decades of the 11th century. It is interesting, first, because it included things of the retinue origin – buttons and a plaque, which were transformed into necklace decorations¹³. An openwork bone plate with the image of a mythical animal – a griffin can be attributed to the same category of finds. It was also used as a neck ornament¹⁴. Such decorations, made from objects of the retinue circle of antiquities, are evidence of contacts of the northern population with representatives of the Grand Duke administration, who were often natives of Scandinavian countries or their descendants. Later, they disappear and in the middle of the 11th century, there are no encounters with them, which relates to changes in the political life of the Ancient Rus state – the division of power between the brothers Mstyslav and Yaroslav after the Battle of Lystven in 1024.

The second hillfort is located in the southern part of the map between the villages of Zhuravne and Ryboten, which makes its localization quite easy. This is a stronghold of the historical city of Losychi, scientifically known as Nemyrivske or Zhuravne 1 (fig. 2)¹⁵. This hillfort is located on a mountain, the only terrain feature on the entire map. According to the way the mountain and the settlement are depicted, we can conclude where exactly the surveyor was located, namely in the creek, east of the settlement. In the foreground, a narrow promontory of the stronghold is highlighted, behind which a fortified position is depicted (fig. 4a). At the end of the 9th – the beginning of the 10th century, a large settlement was founded by Northerners on the high end of the right bank of the Vorskla River. Usually, the settlement structure of the northerners consisted of a fortified hillfort, a settlement, and a burial mound. In this case, two hillforts were built at a short distance from each other. An open settlement and a burial mound began to form around them. At the end of the 10th century, the Kyiv princes began campaigns against the northern tribes to subjugate them. The destruction of the hillfort in the Demydiv Bugor tract dates to this time. It was never restored. On the surface of the hillfort, depressions from the pits of buried structures are still visible. There is no village near this hillfort, and there is a single mound 100 m from the rampart.

Later, the center of life is transferred to the Great Hillfort. It was built in an area with a difficult topography. Erosion processes have formed several promontories and remnants with steep slopes, which are suitable for defence with minimal use of force. The hillfort consists of three parts. The stronghold is located at the end and rises above Vorskla creek. Its slopes are steep, and on the side of the settlement, there is a rampart up to 2 m high. In the southern part of the site, there was a water pit or a well. The lack of space made the northerners place this structure close to the edge of

¹³ Приймак В.В., Осадчий Є.М., Берест Ю.М. Дев'ятнадцятий сезон Сумської археологічної експедиції // Археологічні відкриття в Україні 2001-2002 рр. Київ: Вид. Шлях, 2003. С. 231-232.

¹⁴ Жигола В., Скороход В., Ситий Ю. Дослідження на Заріченському археологічному комплексі... С. 279, рис. 1.

¹⁵ Морзунов Ю.Ю., Приймак В.В., Осадчий Є.М., Коротя О.В. Городища роменсько-давньоруського часу... С. 184-185.

the slope. Over time, erosion processes destroyed the thin outer wall, and a deep depression was formed at the edge of the hillfort. To the west of the stronghold, there is an extensive fortified settlement. It is located lower and does not have steep slopes. The remains of fortifications are recorded only in the northern part, and they are insignificant in size. There is another fortification on the northern side of the settlement. It is small and the latest building in the structure of the hillfort. The open settlement occupies several capes and the remains of the right bank of the Vorskla River, as well as areas in the creek around the hillfort. It was a typical settlement structure for northerners. Changes in the social and political structure of the northern population occurred in 1024. After Mstyslav's victory at Listven, the burials of the retinue disappeared. According to the chronicles, Mstyslav's army consisted of northerners and cavalry of nomadic tribes as opposed to the Varangian army of Prince Yaroslav. After occupying the Chernihiv throne, representatives of the former administration were expelled and replaced by Mstyslav's military retinue. After the death of Mstyslav Udaly, power returned to Yaroslav.

The discovery of the bottom of a pottery pot found by the author in the dump of a robber's pit relates to the presence of a representative of the authorities. It has an imprint of a kryn (a lily-like pattern), which is a princely sign (fig. 4, B5). Usually, such signs were placed on measuring pots, which served as a standard when conducting trade transactions. The image on the bottom has no analogs in the nearest archaeological sites. The image refers to a heraldic bicuspid with a crossed left prong. Similar family signs are associated with the princely family of Vsevolod Olgovich, Prince of Siversk, Chernihiv, and later Kyiv, who ruled in the first half of the 12th century. The image from the bottom of a pot from Zhuravne is similar but has some differences. There is speculation that the pot was either a fake or a replacement for a broken original. The ornaments that come from the hillfort and settlement have analogies among the antiquities of the second half of the 10th-12th centuries and belong to the bearers of the late stage of Romanian archaeological culture and the Ancient Rus population (fig. 4, B6).

Both hillforts are in the middle course of the Vorskla River and were part of the same tribal union of the Northerners, and later the Pereyaslav principality. They survived the Mongol pogrom in the winter of 1239/1240 and continued to exist as small rural settlements until the battle of Vorskla in 1399.

The third archaeological site has its name "ancient rampart" (fig. 2). This defensive structure is stretched from south to north. On the map, it is shown to the west of the road from Okhtyrka to Sumy, and in its northern part, it intersects with the road Oleshnya – Trostyanets. The rampart is in a large forest massif called the Buimer forest. This area has an extremely complex topography – ravines with steep slopes, which are tributaries of the Buimer stream. In the central part, the rampart has a bend of the "redan" type, but it has a considerable length to be a constructive element of the defence. It starts from the Kukuyeve hillfort and ends a little south of the road connecting Trostyanets with Lebedyn, between the villages of Stanova and Zubivka. Such accuracy in drawing the rampart makes it possible to clearly outline the area of its location. This is the territory of the Boromlya and Buimer watershed, which runs in the north-western direction and is crossed by the road from Trostyanets to Mashchanka and Oleshnya. That is where the rampart shown on the map should be located.

During several field seasons, this territory was surveyed by the Sumy archaeological expedition with the author's participation. During this time, several archaeological sites from different times were discovered, but no traces of the rampart were found. Although there are references to its construction in the document of 1652 the "Measuring book with a description of the places where guards are set up" is the result of a large-scale reconnaissance from Obojana to Oleshnya and Kamiane to identify weak points in the border defence. Thus, it describes the territory from the Trostyanets stream to the big black forest, where they had to fill a rampart and build a fort¹⁶. Thus, there is a mention of the intention to fill the rampart exactly where it is shown on the map. One of the elements of this defensive structure was discovered between the village of Zarichne and Trostyanets. These are the remains of the observation tower near the mound¹⁷. But further to the north, no traces of the rampart were found, besides, this structure is located east of the Okhtyrka – Sumy Road, which contradicts the location of the rampart on the map. To the east, on the Sosonka River, there were the remains of the fortifications of the Losytsk fortress from the middle of the 17th century, but no remains of a rampart were found near it either¹⁸. A rampart could not disappear without a trace in an area where the forest is growing, and no earthworks were carried out. Its remains, at least in the form of separate sections, had to be preserved.

What shaft was depicted on the map of 1724? Surveyor Borys Baturyn was an experienced specialist who took and drew a significant number of maps of the districts of North-Eastern Ukraine, and this issue requires detailed consideration.

As to the map, it is necessary to consider the fact that the main survey was conducted along the border of the Oleshnya district and the rivers. That is, these are areas of open terrain where it is possible to triangulate the main shooting points and refine them using astronomical measurements. It is extremely difficult to carry out the same work in a dense forest. The line-of-sight distance in the forest does not exceed 5-10 m, and the difference in terrain complicates shooting. The absence of terrain relief is a feature of land maps, and therefore there was no need for detailed shooting in the forest area. Therefore, the main works were carried out around the forest, and the massif was also inspected only slightly.

There are ramparts in the Buimer forest, and they are the remains of the defensive structures of three settlements of the early Iron Age, located at the source of the Sosonka River. This unique location of three hillforts on neighbouring capes gives the impression of a continuous rampart¹⁹. The impression of a long shaft is complemented by a notice about a settlement near the village of Zubivka (Zubov gorod), at the headwaters of the Buimer stream. So far, it has not yet been discovered, but its location and description, published by D.I. Bahaliem testify to its considerable

¹⁶ Акты, относящиеся к Малороссии. Сообщены *В.И. Холмогоровым*. Чтения в Императорском обществе истории и древностей Российских при Московском Университете. Москва: В Университетской типографии на Страстном бульваре. Апрель-июнь. Книга вторая. 1885. С. 18.

¹⁷ *Осадчий Є.М.* Сторожовий пост Вольнівської ділянки Білгородської засічної смуги // Археологія і фортифікація України. Збірник матеріалів VI Міжнародної науково-практичної конференції. Кам'янець-Подільський: ПП Буйницький О.А., 2016. С. 244-245.

¹⁸ *Осадчий Є.М.* Замок Ієремії Вишневецького на Середній Ворсклі // Наукові записки [Національного заповідника «Замки Тернопілля»]. 2017. № 7. С. 173-175.

¹⁹ *Гречко Д.С., Берест Ю.М., Коротя О.В., Осадчий Є.М., Крютченко О.О.* Археологічні розвідки на Сумщині у 2015 р.... С. 223-224.

size²⁰. Thus, most likely, geodesist Borys Baturyn could take several hillforts located along the Buimer stream as a single rampart.

CONCLUSIONS

Thus, we can conclude the following. The map of 1724 is a valuable source for studying not only the early modern history of Ukraine but also individual monuments of archaeology. Such sources are not always accurate but sometimes contain information about the location of now-emerged archaeological objects or their lost names. In this case, we are dealing with the introduction to the scientific circulation of one pictorial source of the first half of the 18th century and the authors' attempt to localize and connect the objects on the map with specific archaeological monuments. Some of the archaeological sites marked on the map are well-known settlements of the pre-state and Ancient Rus periods. Their application is accurate and does not cause doubts. Therefore, the presence of a large rampart, which, despite almost a century of research in this area, was never discovered, is at least partially one of the mysteries of this source. The authors speculate on the interpretation of this image and its possible connection with real hillforts.

REFERENCES

- Aleksandrov, B.V.** (1946). *Opisanie rukopisnykh kart XVIII v., khraryashchikhsya v Otdele rukopisnoy knigi Biblioteki Akademii nauk SSSR* [Description of manuscript maps of the 18th century stored in the Department of the Manuscript Book of the Library of the Academy of Sciences of the USSR]. In **Gnucheva V.F.** *Geograficheskii departament Akademii nauk XVIII veka. Prilozheniye II*. Moskva-Leningrad, 267-412 [in Russian].
- Bagalei, D.I.** (1905). *Predislovie k arkheologicheskoi karte Kharkovskoi gub. Obiasnitelnyi tekst k arkheologicheskoi karte Kharkovskoi gubernii* [Preface to the archaeological map of the Kharkov province. Explanatory text to the archaeological map of the Kharkov province]. In *Trudy XII Arkheologicheskogo siezda*. Moskva: Izd. MAO. Vol. 1. Pp. 1-92 [in Russian].
- Degtyarev, S.** (2014). The History of Bureaucracy of the Russian Empire in the Russian Historiography of XIX – Early XX Century. *Bylye Gody*, 34 (4), 554-558 [in Russian].
- Degtyarev, S.I. & Kryvosheia, I.I.** (2016). The Incorporation of Bunchukovogo Partnership in Part of Service and Social Elite of the Russian Empire in the last third of the XVIII century. *Bylye Gody*, 42 (4), 1118-1126 [in Russian].
- Degtyarev, S.I. & Osadchij, E.M.** (2022). Delimitation of the Border between the Polish-Lithuanian Commonwealth and the Muscovy in the Interfluvium of the Sula and the Sejm in the first half of the 17th century. *Bylye Gody*, 17 (4), 1513-1522. DOI: 10.13187/bg.2022.4.1513 [in Russian].
- Filaret** (1857). *Istoriko-statisticheskoe opisanie Kharkovskoi eparkhii* [Historical and statistical description of the Kharkiv eparchy]. Vol. 3. Moskva: Tip. V. Gotie [in Russian].
- Goldenberg, L.A.** (1985). *Mikhail Spiridonovich Gvozdev (nachalo XVIII v. – posle 1759 g.)* [Mikhail Spiridonovich Gvozdev (beginning of the 18th century – after 1759)]. Moskva: Nauka [in Russian].
- Hrechko, D.S., Berest, Yu.M., Korotya, O.V., Osadchyi, Ye.M. & Kryutchenko, O.O.** (2016). *Arkheolohichni rozvidky na Sumshchyni u 2015 r.* [Archaeological explorations in the Sumy Oblast in 2015]. *Fenomen Bilskoho horodyshcha 2016*. Zbirnyk materialiv naukovoyi konferentsiyi. Kyiv-Poltava: TSP NAN Ukrainy i UTOPIK. S.211 – 231. [in Ukrainian].
- Kholmogorov, V.I.** (1885). *Акты, относящиеся к Малороссии. Чтения в Императорском обществстве истории и древностей Российских при Московском Университете* [Acts related to Little Russia. Readings in the Imperial Society of Russian History and Antiquities at Moscow University]. Moskva: V Universitetskoy tipografii na Strastnom bulvare. Vol. 2. Pp. 1-46 [in Russian].
- Morhunov, Yu.Yu., Pryimak, V.V., Osadchyi, Ye.M. & Korotya, O.V.** (2022). *Horodyshcha romensko-davnoruskoho chasu Sumskoyi oblasti* [Hillforts of the Romanian-Ancient Russian period in the Sumy region]. Kharkiv: Ekspres-knyha [in Ukrainian].

²⁰ *Багалея Д.И.* Предисловие к археологической карте Харьковской губ.... С. 75.

- Motsia, A.P., Orlov, R.S. & Pokas, P.M.** (1986). *Otchot o rabote Dneprovskoy drevnerusskoy ekspeditsii v s. Zhuravnoye v 1986 g.* [Report on the work of the Dnieper Old Russian expedition in the village]. The Scientific Archive of the Institute of Archeology, NAS of Ukraine. F.e. № 22024-22027. 1986/30 [in Russian].
- Osadchy, Ye.M.** (2016). Storozhovyi post Volnivskoyi dilianky Bilhorodskoyi zasichnoyi smuhy [Sentinel post of the Volniv section of the Belgorod strip]. Proceedings of the Conference: VI Mizhnarodna naukoivo-praktychna konferentsiya 'Arkheolohiya i fortyfikatsiya Ukrainy'. Kamyanets-Podilskyi: PP Buinytskyi O.A., 244-247 [in Ukrainian].
- Osadchy, Ye.M.** (2017). Zamok Ieremii Vyshnevetskoho na Seredniy Vorskli [Castle of Ieremia Vyshnevetsky on Middle Vorskla]. *Naukovi zapysky*, 7, 173-178 [in Ukrainian].
- Osadchy, Ye.M.** (2022). «Plan horodu Aleshny» pershoi polovyny XVIII stolittya [“Plan of Aleshna City” of the first half of the 18th century]. In *Starozhytnosti Livoberezhnoho Podniprovya – 2021: zbirnyk naukovykh prats. Pamyati I.H. Shovkoplyasa (1921-1997)*. Kharkiv-Poltava: TOV «Maydan», 161-170 [in Ukrainian].
- Pryimak, V.V.** (2007). *Putyvlske udilne knyazivstvo Chernihovo-Sivershchyny* [Putyvl Principality of Chernihiv-Sivershchyna]. Poltava: Tekhservis [in Ukrainian].
- Pryimak, V.V., Osadchy, Ye.M. & Berest, Yu.M.** (2003). Deviatnadtsiatyi sezon Sumskoyi arkheolohichnoyi ekspedytsii [The Nineteenth Season of the Sumy Archaeological Expedition]. *Arkheolohichni vidkryttia v Ukraini 2001-2002 rr.* Kyiv: Vyd. Shlyakh, 231-232 [in Ukrainian].
- Tretiakov, P.M.** (1947). Starodavni slovyanski horodyshcha u verkhniy techii r. Vorskla [Ancient Slavic settlements in the upper reaches of the Vorskla River]. *Arkheolohiya*, Vol. I, 123-128 [in Ukrainian].
- Zhyhola, V., Skorokhod, V. & Sytyi, Yu.** (2022). Doslidzhennia na Zarichnenskomu arkheolohichnomu kompleksi [Research at the Zarichnensky Archaeological Complex]. *Arkheolohichni doslidzhennya v Ukrayini 2020*. Kyiv: Instytut arkheolohiyi NAN Ukrayiny, 279-280 [in Ukrainian].