

AN EFFECTIVE WAY TO ROCK MASS PREPARATION ON METALLIC AND NONMETALLIC QUARRIES UKRAINE

¹*Ishchenko K.S.,* ²*Konoval V.M.,* ¹*Lohvyna L.O.*

¹*Institute of Geotechnical Mechanics named N. Poljakov of National Academy of Science of Ukraine,* ²*Cherkasy State Technological University*

ЕФЕКТИВНИЙ СПОСІБ ВИБУХОВОЇ ПІДГОТОВКИ ГІРНИЧОЇ МАСИ НА РУДНИХ І НЕРУДНИХ КАР'ЄРАХ УКРАЇНИ

¹*Ищенко К.С.,* ²*Коновал В.М.,* ¹*Логвина Л.О.*

¹*Інститут геотехнічної механіки ім. М.С. Полякова НАН України,* ²*Черкаський державний технологічний університет*

ЭФФЕКТИВНЫЙ СПОСОБ ВЗРЫВНОЙ ПОДГОТОВКИ ГОРНОЙ МАССЫ НА РУДНЫХ И НЕРУДНЫХ КАРЬЕРАХ УКРАИНЫ

¹*Ищенко К.С.,* ²*Коновал В.М.,* ¹*Логвина Л.А.*

¹*Інститут геотехнічної механіки ім. Н.С. Полякова НАН України,* ²*Черкаський державний технологічний університет*

Annotation. The article is aimed at developing method in experimental studies and industrial-Polygon particular conditions justifying the choice of a rational design of an explosive charge for an effective way to rock mass preparation on metallic and nonmetallic quarries Ukraine. The comparative results of the evaluation of the stress wave's amplitudes studies and the character of crushing hard media from the explosion of the charge explosives-variable and constant cross section. It has been established experimentally that with an explosion of a variable height charges, the stresses in a compression wave is higher than with an explosion of constant cross section charges. It is shown that the total mass of the model parts break by the explosion by a variable cross section charge is greater than with the explosion of other designs charges such as: of constant cross section, variable diameter along the charge column with the boiler extension on bottom and with an air gap. This increases the volume as large fractions $d > 50$ mm and the average diameter of the piece. The dependences of the particle size distribution of various designs explosive charges destroyed by the explosion are constructed. In industrial conditions, the rationale for the explosive boreholes location according to the massif structure. Adjusted boreholes location grid on rational parameters blasting unit, determined using a novel method of breaking rock complex structure. A new design of a combined borehole charge of variable cross section has been proposed. The use of the proposed design of the combined borehole charge of variable cross-section makes it possible, with a constant mass of charge, to increase its length and, as a result, to more evenly distribute the explosives over the step height. At the same time, the conditions for the transfer of energy from the charge explosive change when a multi-gradient and multidirectional stress field is formed in the massif that collapses. Industrial tests performed and evaluation of the effectiveness of the proposed method blasting locally fractured rocks and ore deposits on non-metallic minerals. Recommendations on their use are given.

Keywords: rock mass, explosive, charge structure, particle size distribution

Introduction. A significant portion of the energy expended in the blast zone immediately adjacent to the charging of the cavity (usually 2-3 charge radius), where the overgrinding environment, leading to losses of minerals on metallic and nonmetallic quarries.

As noted in [1], management of the size of the overgrinding zone of rocks and reduction of the fine fractions output can be achieved both by reducing the contact area of the boreholes charge and the rock to be destroyed, and by creating conditions that reduce the dynamic impact of an explosion on the charging cavity surface.

In this case, the useful effect of a rocks blasting can be enhanced in various ways, and in particular, by regulating the value of the specific energy of the explosive by a combined charge of variable cross section.

There are several ways to form elongated charges, such as: the creation of extended areas, the diameter of which is larger than the diameter of the original charging cavity, in the probing wells [1-3], placing inside the charging cavity of a continuous column of explosive in Polyethylene shells of variable diameter [4], with an air gap and reflector of blast waves [5] in the form of a cone with a decreasing diameter to the wellhead [6], shaped charges [7], combined charges for the complex structure rocks blasting [8-9], charges with different cross section configurations [10-11], charging location within the cavities of hollow shapes of inert material [12].

The above construction of elongate borehole charges in the massif can create differently directed and different gradient stress field and simultaneously reduced, by reducing the area of direct contact with the rock dynamic of the explosion impact on the charging chamber surface.

The above design of elongated borehole charges in the massif can create a multidirectional and multigradient stress field, while reducing the area of direct contact with the rock during dynamic explosive effects on the charging chamber surface.

The aim of the research – study and the effectiveness evaluation of strong rocks destroying by variable section charges with cumulative effect.

Experimental results.

Method experimental studies fracture solid media with blast. Blasting operations at mining enterprises largely determine the effectiveness of subsequent technological processes. One of the effective methods of controlling the explosion action, and, consequently, rocks crushing, is the correct choice of the explosive charge design. To estimate the wave and a destructive action of explosion in hard media by charges of different designs are elaborated a method of modeling rock explosive destruction [13].

The purpose of the experimental studies - justification, selection and evaluation of the destructive action of the new design of the charge voltages largest amplitude in the compression wave generated by the explosion of the same by weight explosive charges of different designs.

For experimental studies were made of the model of sand-cement mixture cubic shape with edge 150 mm. In the center of the model was formed cylindrical cavity (diameter 10 mm, depth 85 mm) for placement of explosive charges. Around the charging chamber and adjusted in its end face 2 of the sensor, one to a depth of 75 mm from the upper face pattern and spaced from the axis of the charge of 45 mm, and the other - at a distance of 20 mm below the end of the charge cavity (Fig. 1).

Ceramic sensors are quadrants disc diameter 14.8 mm and a thickness 65 mm. Before installing the sensors in the model were measured their electrical capacity and is calculated discs area. The area of each sensor is equal to 1/4 of the disc area and was $4.3 \cdot 10^{-5} \text{ m}^2$. Then conducted calibration electric converters resonance-ant resonance method, and the piezoelectric modulus was determined by calculation each sensor [15].

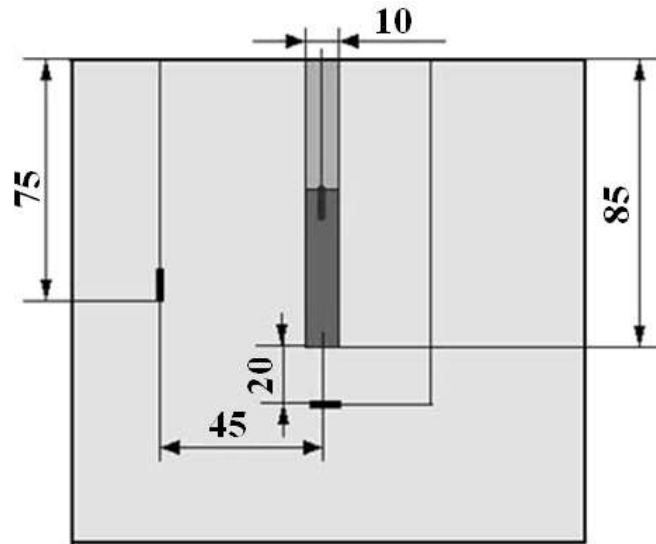


Figure 1 – The layout of the sensors in the model relative to the charge of explosive

In the charging cavities of the models, elongated cylindrical charges of various designs were formed: charges of constant cross section, variable cross section, with boiler expansion at the end; charge of variable diameter (charges with uniformly alternating along the charge column narrowed and widened sections; charges with an air gap and a spherical insert - a hollow ball inside the charge). Schemes study designs charges are shown in Figure 2.

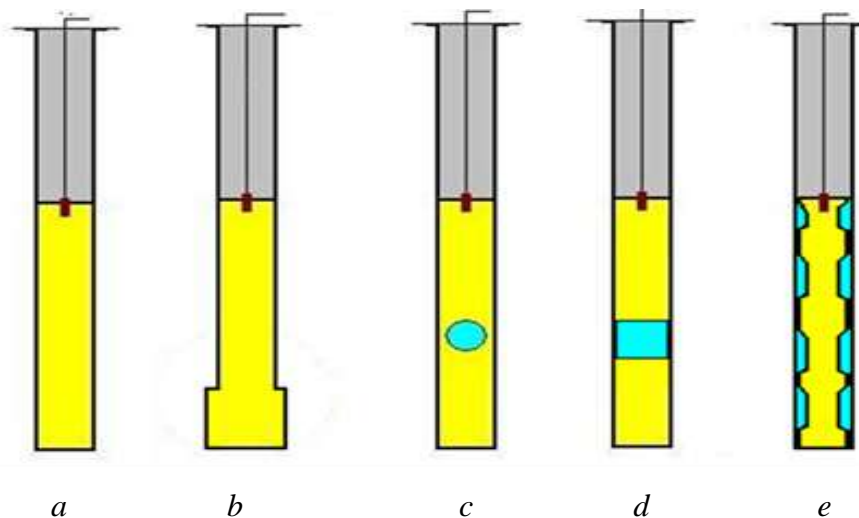


Figure 2 – Charge construction: *a* – constant cross section explosive charge; *b* – charge explosive with boiler expansion at the end holes; *c* – explosive charge with a spherical insert; *d* – charge with an air gap; *e* – variable diameter explosive charge

Elongated charges were formed in paper cartridges, the outer diameter of which was 0.95 diameters of the charging cavity. Ammonite #6 with a mass of 3.5 g was used as an explosive. For all series of experiments, the specific consumption was 0.3 kg/m^3 . Charges initiated segment of detonating cord length of 0.8 m, connected to a detonating cap and detonating device. Explosions models produced in a thick-walled metallic rubberized blasting chamber (Fig. 3).



Figure 3 – Appearance of the blast chamber

When charges exploded in the models, the maximum mechanical stresses in the compression wave were recorded by sensors and converted into electrical signals, which in the form of a code were fed to a digital oscilloscope.

Before the measurements were carried out oscilloscope calibration and set necessary for this experiment the sensitivity of the amplitude and duration of signals obtained during test explosions.

Read and encoded information is transmitted to the computer system – NOTEBOOK, where is the use of special programs processed and displayed on a monitor in the dialog box as a waveform with numeric data on the entire measurement range. The oscillograms were used to determine the maximum values of the electrical signals and the pulse duration.

After the destruction of the explosion models, the crushing products were scattered on laboratory sieves with openings of 0.25; 0.5; 1.0; 2.0; 3.0; 5.0; 7.0; 10.0; 12.0; 16.0; 20.0; 26.0; 30.0; 40.0; 50.0; 60.0; 70.0; 80.0 mm and established their main particle size characteristics [16].

Results and discussion. Experimental studies of the explosion wave and destructive various designs charges action on models were carried out in the conditions of PJSC Poltava mining and processing plant according to the developed technique [15]. The experimental data were calculated stresses in the compression wave at the same distance from the axis of the charge.

The distance from the charging cavity to the sensor for various designs of the explosive charge was $9r_0$ in the horizontal direction and $4r_0$ vertically, i.e. at the end of the charging cavity, (r_0 – charging cavity radius).

The mechanical stresses σ arising in the model during the explosion of an extended explosive charge, then converted by electrical piezoelectric sensors into electrical signals, were recorded with a digital oscilloscope and calculated by the formula

$$\sigma = CU / (d_{33} S_{\text{seg}}),$$

where C – electric sensor capacitance, F; d_{33} – piezomodulus, C/N; S_{seg} – sensor surface area, m^2 ; U – a voltage, V.

In processing the particle size distribution was determined: total mass destroyed by explosion of the model, the content of fine fraction, the content of coarse fractions and the average diameter of the piece. The results of analysis of experimental data given in Table 1.

Table 1 – Calculated and experimental data from the explosion of various designs charges in the model

Explosive charge constructions	Stresses in the compression wave, σ , GPa		Mass explosion destruction of the model, g	Content of large fractions $d_i > 50$ mm	The middle piece diameter d_m , cm
	\perp to the compression wave direction	At the end of the charge axis			
Constant section	0.010	0.025	2470	1020	30.7
Air gap	0.0098	0,025	3760	1330	33.0
Spherical insert	0.012	0.033	3480	1630	35.0
Sprung expansion in the bottom	0.0095	0.028	2600	1340	35.8
Alternating narrowed and widened areas	0.008	0.000148	1980	850	32.5

According to the particle size distribution of the destruction products of models by explosion of different designs charges, the histogram of crush fractions was built (Fig. 4).

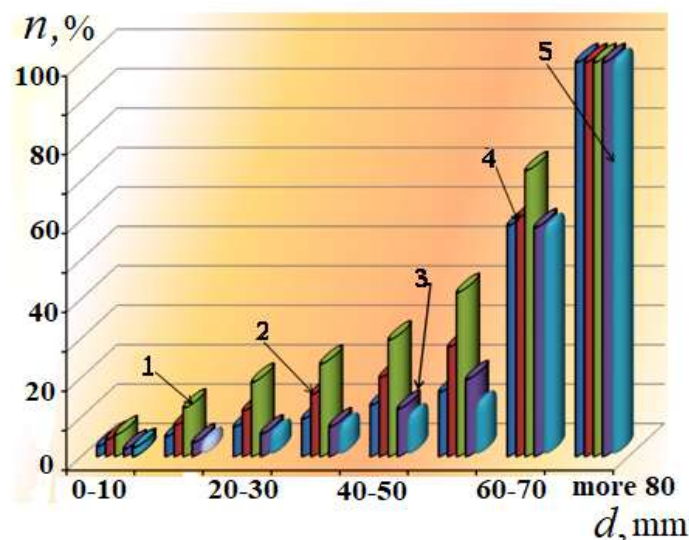


Figure 3 – Histogram of the models particle size distribution that destroyed by various designs explosive charges: 1 – charge with a spherical insert; 2 – charge with air gap; 3 – charge with boiler expansion at the hole end; 4 – total charge; 5 – variable diameter charge in column height

Analysis showed the following results of experiments. During the explosion charges of variable in height section of the stresses in the compression wave are higher, the total mass of the models parts repulsed is greater than during the of other designs charges explosion, namely: constant section, variable diameter across the charge column, with the boiler expansion at the end and with air by the gap. In addition, increases volume as large fractions $d_i > 50$ mm, and the middle piece diameter.

Experiment results in industrial conditions. For rational justification parameters explosive fracture rocks complex structure (granite) quarries “Sivach”, “Vita Soris”, “Tomashhorod”, “Ukrahrovzryvprom” industrial tests were carried out a new method of breaking [14] based on the change in charge of design features.

Rocks in quarries are represented by gray water-rich fine-grained granites with red inclusions of $f = 12-16$ points on a scale of prof. M.M. Protodyakonov. The running water level in the boreholes reaches 1.0-2.0 m with average the massif water content of 15-20 %.

The nature of the complex structure rocks destruction, as is known, is influenced by both their microstructure (microcracks orientation and the physical and mechanical properties anisotropy of rock-forming minerals) and the macrostructure of the massif (joints spatial position of different morphology that divides the exploding block).

Therefore, when choosing the parameters of drilling and blasting operations (specific explosives consumption, geometry of the boreholes grid location and the breaking direction), such that micro and macro structures features should be taken into account. This allows obtaining a uniform crushing of the rock at the lowest possible fine fractions.

To establish the main characteristics of the fracture structure of the granite massif within the mining allotment of the quarries “Sivach”, “Vita Soris”, “Tomashhorod” using the methodology described in [14], a stereo photographic survey of the bare faces was carried out on the horizons selected for industrial testing developed methods for blasting complex structural rocks (block 01/12, horizon +58 m and block 04/11, horizon +68 m).

Decryption stereo pairs performed using standard computer programs. Visible in photographs horizontal and vertical macrocracks in this case depicted as a different thickness of lines, followed by projection onto the surveying rail to determine basic parameters of rock fracturing breakable block (Table 2).

To determine the effect of cracks in the explosive on the anisotropic massif destruction along the slaughter line are drilled and blasted holes (diameter 36-43 mm, the depth of 1.0-1.5 m, explosive – ammonite patron #6). By the size of large a and small axis funnels explosion b axes and its orientation relative to the north-south-line, the coefficient of anisotropy was calculated from the expression $K = a/b$ which averaged 1.14.

Table 2 – Average crack systems distribution parameters for quarries “Sivach” “VitaSorix” and “Tomashhorod”

Name of joints (Cloos nomenclature)	Coefficient of jointing, 1/m	Distances between joints walls, mm	Distance between separate joints, m	Width of the higher zone jointing, m	Distances between zones centers, m
S-joints (longitudinal)	3-5	0.01-0.15	0.1-2.6	40-60	45-66
Q-joints (transverse)	1-3	1.0-3.5	1.0-5.8	50-60	60-75
L-joints (horizontal)	3-7	0.05-0.15	0.5-1.5	higher jointing zones are absent	—

Using the developed nomograms (Fig. 5) and taking into account the data of the anisotropy coefficient, the parameters of the holes grid of the current passport for drilling and blasting operations in the experimental section of the block were equal to 4.5×5.5 m instead of 5×5 m. Its long side coincides with the maximum values direction of the energy the explosion flow vector in the destroyed massif F_{\max} .

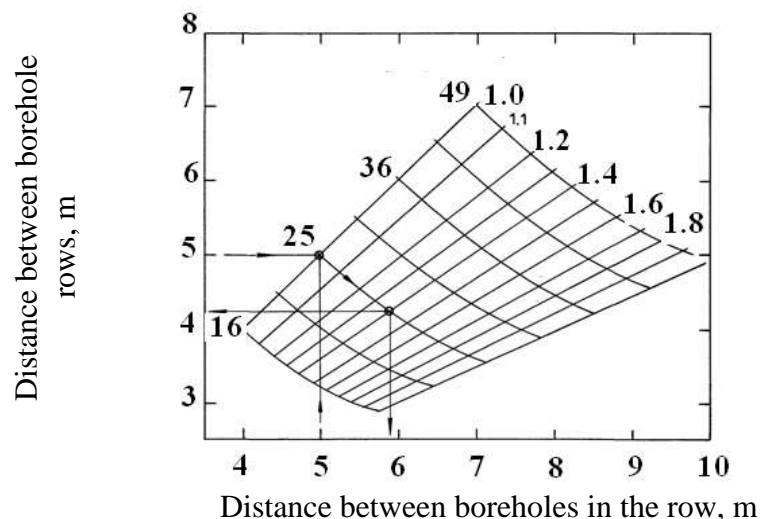


Figure 5 – Nomograms for adjusting the boreholes grid with anisotropy coefficient

In accordance with the modified parameters of the boreholes grid ($a=5.5$ m – the distance between the holes in the row and $b=4.5$ m – the distance between the rows of wells), and also taking into account the zones of increased fracturing identified in one of the experimental blocks, oriented orthogonal face of the line, in the massif drilled boreholes according to the current passport blasting (diameter 150 mm, depth 10.0-11.0 m, drill 0.6-1.0 m). Scheme of the experimental block is shown in Figure 6.

After the blocks were drilled, holes were loaded (Fig. 8). Combined well charges were formed at the test area, according to the approved standardized passport for mass blasting for this block. To do this, the hole was left 2.0-2.4 m under the stemming, and the rest of the hole was divided into two equal sections. The mixed explosion of trinitrotoluene TNT (trinitrotoluene TNT + granulated ammonium nitrate in a proportion 65/35) or emulsion explosives such as Anemix were placed in

the lower part of the borehole, the booster explosive of two TNT blocks T-400 connected by wave guide with plain detonator by non-electric system of initiation “Impuls” or “PRIMA-ERA” was installed. After that, the top part was filled with conversion explosive material (charge section is with plastid DKRP-4) and the top booster explosive was installed. The space between walls of borehole and section with conversion explosive was filled up with mixed explosive – TNT. The mouth of borehole was encapsulated by tamping of stone screening dust (fraction of 3-5 mm).

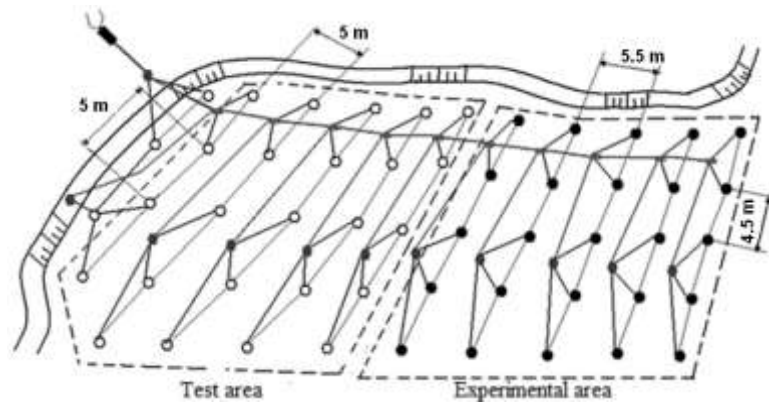


Figure 6 – The boreholes placement diagram and charges commutation (quarry “Sivach”, block 01/12, horizon +58.0 m)

At the experimental site, the formation of charges was carried out taking into account the isolated zones increased fracturing. Thus, in the block rock mass in the direction of the extended zones with pronounced local fracturing in the drilled wells, extended combined charges of variable cross section were formed. The design of the developed variable-charge explosive of a variable cross-section is shown in Figure 7.

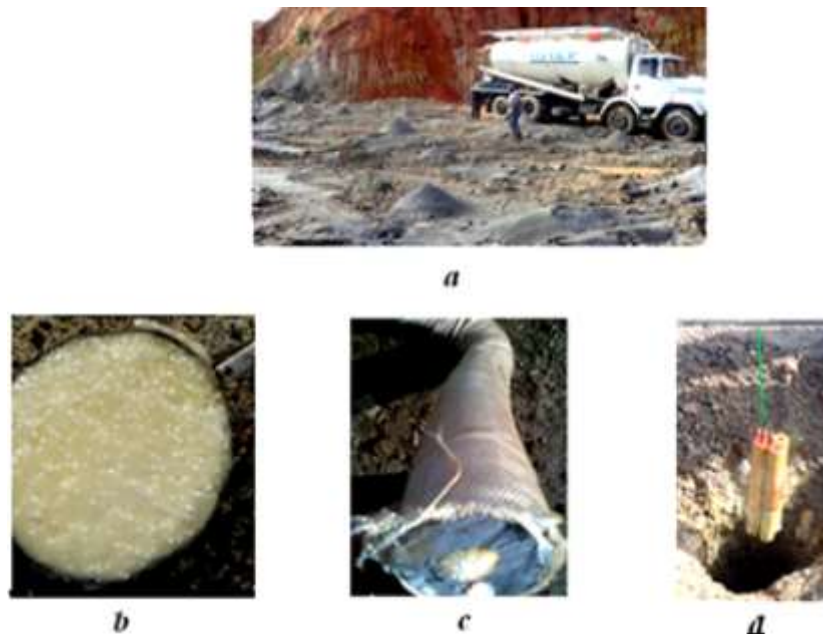


Figure 7 – Charge of boreholes on the block: a – appearance of the unit with a charging machine; b – emulsion explosive such as Anemix; c – charge section with conversion explosive; d – installation of the initiator mounted from the TNT checker TN - 400 in the borehole

The formation of variable cross-section charges in holes was carried out by placing in the lower section of the explosive's column, interconnected in a chain with a twine spherical cavities – balls, with a diameter of $0.8 D_h$ (Fig. 8), where D_h – borehole diameter. The distance between the spherical cavities was taken equal to the active part of the shaped charge length [14].

Variable diameter charges of with spherical cavities are formed in monolithic block rocks zones, and continuous structure charges are formed in jointing zones. The lower section of charge was filled with the mixed explosion of TNT or emulsion explosive such as Anemix; the top section was filled with conversion explosive with plastid, and the top booster was installed. The space between walls of borehole and section with conversion explosive was filled up with mixed explosive – TNT or pyroxylin powder.

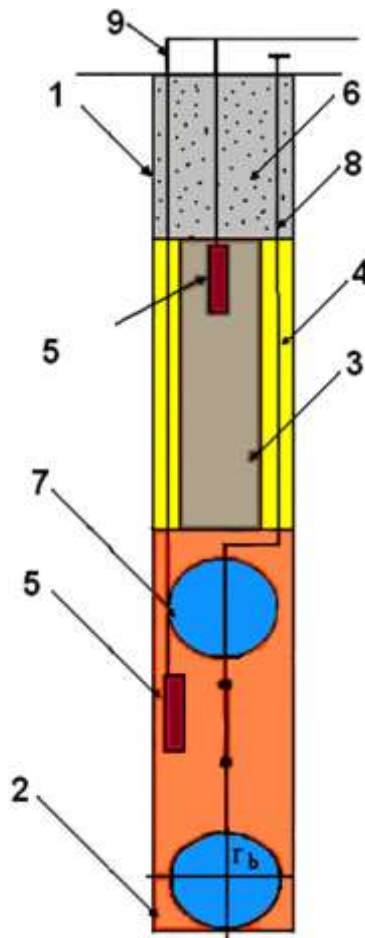


Figure 8 – Structure of the borehole multicharges variable diameter: 1 – borehole; 2 – mixed explosive charge; 3 – conversion explosive section; 4 – pyroxylin powder; 5 – primed blasting cartridge; 6 – stemming; 7 – spherical cavities; 8 – binder for connection of spherical cavities; 9 – initiation “Impulse” non-electric system

The charges groups were connecting in network carried out and then commutation of borehole charges on rock block took place. The delay elements of UNS-S and UNS-PA were placed between groups of charges in each level, and blasts were carried out starting with the charges located on the flank. Blasting on the block was proceeding with the use of non-electric systems of initiation “Impulse”, NONEL,

“PRIMA-ERA”. According to results of mass explosions, the evaluation of crushing results of the blasted mined rocks was carried out in experimental and test areas. Quality of crushing was evaluated by diameter of an average piece with measurement of particle size distribution of blasted mined rocks with application of a method of oblique-angled photoplanimetry. The calculation results are presented in Table 3.

Table 3 – Calculation of average piece sizes of blasted rocks mass on experimental explosions*.

Experimental area				Test area			
Fineness classes, mm	Average size of piece on class, d_i , mm	Fractions output, W_i , %	$d_i \times W_i$	Fineness classes, mm	Average size of piece on class, d_i , mm	Fractions output, W_i , %	$d_i \times W_i$
0-200	100	41.0	4100	0-200	100	26.7	2670
201-400	300	34.0	10200	201-400	300	24.5	7350
401-600	500	17.3	8650	401-600	500	20.6	10300
>600	700	7.7	5390	>600	700	28.2	19740
Σ			28340	Σ			40060
$d_{av} = \Sigma d_i W_i / 100 = 283.4$ mm				$d_{av} = \Sigma d_i W_i / 100 = 400.6$ mm			

Note: * – average values on experimental explosions.

Conclusions.

1. It has been established experimentally that with an explosion of a variable height charges, the stresses in a compression wave is higher than with an explosion of constant cross section charges. It is shown that the total mass of the model parts break by the explosion by a variable cross section charge is greater than with the explosion of other designs charges such as: of constant cross section, variable diameter along the charge column with the boiler extension on bottom and with an air gap. This increases the volume as large fractions $d_i > 50$ mm and the average diameter of the piece.

2. Analysis of the industrial experiments results showed that the use of modified parameters of drilling and blasting operations using designs of variable section charges (Table 2) reduces the average piece diameter by about 30 % and the industrial explosives consumption by 10-40 %. The output of a standard piece (201-600 mm) is increased by 10 %.

3. A new method of blasting strong complex structural locally fractured rocks can improve the quality of the blasted rock mass crushing and improve the technical and economic performance of mining enterprises by adjusting the basic parameters of drilling and blasting.

4. The use of the proposed design of the combined borehole charge of variable cross-section makes it possible, with a constant mass of charge, to increase its length and, as a result, to more evenly distribute the explosives over the step height. At the same time, the conditions for the transfer of energy from the charge explosive change when a multi-gradient and multidirectional stress field is formed in the massif that collapses.

5. In the course of industrial tests in the period 2012-2018, according to the developed recommendations, about 1500 thousand m³ of rocks were blown up on granite quarries of PJSC "Ukrahrovzryvprom".

REFERENCES

1. Efremov, E.I. (2007), "Controlling the size of the over-grinding zone of rocks during their explosive destruction", *Bulletin of the Kryvyi Rih Technical University*, no. 18, pp. 36-39
2. Osinnii, V.Ya. and Osinnia, N.V. (2013), "About the boiler cavity and the rational design of the charge at breaking of strong ores under underground conditions", In *Development, use and ecological safety of modern granular and emulsion explosives*, pp. 39-41.
3. Osinnii, V.Ya. (2016), "The penetration of the uprising excavations by blasting hole charges on the compensation cavity formed by the plasma method", *Bulletin of the Ukrainian Union of Explosives Engineers*, no.1 (29), pp. 17-20.
4. Efremov, E.I. [and others] (2018), "Destruction of solid media with their different gradient explosive loading by elongated charges of variable diameter", *Collection of scientific works State HEI "NMU"*, no. 54, pp. 52-60
5. Tyshchenko, S.V. [and others] (2015), "Justification of the parameters of the downholes charge of an explosive with an air gap and a reflector from bulk materials", *Metallurgical and Mining Industry*, no. 2, pp. 90-93.
6. Rahmanov, R.A. (2013), "Borehole charge designs with varying diameters at the top of the ledge", *Gornyy informatsionno-analitichesriy bulletin*, no. 8, pp. 205-207.
7. Norov, U.D. [and others] (2016), "Intensification of the destruction of an array of various rock rocks with explosive charges with a cumulative effect", *Mining Journal*, no. 2, pp. 32-34.
8. Rahmanov, R.A. (2013), "Substantiation of the parameters of the combined design of a downholes charge for a different massif", *Gornyy informatsionno-analitichesriy bulletin*, no. 8, pp. 207-209.
9. Dygarchirenov, A.V. [and others] (2015), "Requirements for the choice of parameters for blasting operations for crushing complex rock massifs by combined and additional charges", *Blasting work*, no. 113 (70), pp. 142-148.
10. Petrenko, V.D. and Konoval, S.V. (2014), "Experimental investigation of influence of cross-sectional shape of charge on nature of solid medium destruction", *Modern resource-saving technologies of mining production*, no. 2, pp. 31-43.
11. Ishchenko, K.S. [and others] (2015), "Features of destruction of solid media by explosive charges of various shapes", *News of Higher Education. Mining Journal*, no. 5, pp. 75-79
12. Ishchenko, K.S., Kratkovsky, I.L., Konoval, S.V. and Konoval, V.M. (2014), *Sposid vybukhovogo ruinuvannia kjrřkmyj-trishchynuvatykh anizotropnykh girskykh porid* [Method of blasting of local-fractured anisotropic rocks], Patent No 105730, Ukraine
13. Ishchenko, K.S., Konoval, S.V., Kratkovsky, I.L., Krukovsky V.V. and Konoval, V.M. (2016), *Sposib modeliuvannia vybukhovogo ruinuvannia girskykh porid* [Method of simulation of explosive destruction of rocks], Patent No 110745, Ukraine
14. Ishchenko, K.S. (2012). The way to create a heterogeneous explosive loading of a solid medium along the length of the charge, *Modern resource-saving technologies of mining production*, no. 2 (10), pp. 83-88.
15. Glzman, I.O. (1965), *Piezoelektricheskie materialy v elektronnoy tekhnike* [Piezoelectric materials in the electronic engineering], Energy, Moscow-Leningrad, SU.
16. Baron, L.I. (1960), *Kuskovatost i metody ee izmereniya* [Lumpiness and its measurement methods], Publisher AN USSR, Moscow, SU.

СПИСОК ЛІТЕРАТУРИ

1. Ефремов Э.И. Контроль размеров зоны переизмельчения горных пород при их взрывном разрушении // Весник Кр.НТУ. 2007. № 18. С. 36-39.
2. Осенний В.Я., Осенняя Н.В. О котловой полости и рациональной конструкции заряда при разрушении прочных руд в подземных условиях // Разработка, использование и экологическая безопасность современных гранулированных и эмульсионных взрывчатых веществ. 2013. С. 39-41.
3. Осенний В.Я. Проведение восстающих выработок за счет взрывния зарядов на компенсационную полость, образованную плазменным методом // УСИБ. 2016. №1/(29). С. 17-20.
4. Ефремов Э.И. и др. Разрушение твердых сред при различном разноградиентном взрывном нагружении удлинными зарядами переменного диаметра // Сборник научных трудов ГВУЗ «НГУ». 2018. № 54. С.52-60
5. Тищенко С.В., Федоренко П.И., Еременко Г.И. и др. Обоснование параметров скважинного заряда взрывчатого вещества с воздушным промежутком и отражателем из сыпучих материалов // Metallurgical and Mining Industry. 2015. № 2. С. 90-93.
6. Рахманов Р.А. Конструкции скважинных зарядов с различного диаметра в верхней части уступа // ГИАБ. 2013. № 8. С. 205-207.
7. Норов Ю.Д., Бунин Ж.В., Нуфтуллаев Г.С. и др. Интенсификация разрушения массива разнопрочных горных пород зарядами ВВ с кумулятивным эффектом // Горный журнал. 2016. №2. С. 32-34.
8. Рахманов Р.А. Обоснование параметров комбинированной конструкции скважинного заряда для горного массива // ГИАБ. 2013. № 8. С. 207-209.
9. Дугарцыренов А.В., Ким С.И., Бельченко Е.Л. и др. Требования к выбору параметров БВР для дробления сложноструктурных массивов горных пород комбинированными и дополнительными зарядами // Взрывное дело. №113/70. М.: Недра, 2015. С. 142-148.

10. Петренко В.Д., Коновал С.В. Экспериментальные исследования влияния формы поперечного сечения заряда на характер разрушения твердой среды // Сучасні ресурсоенергозберігаючі технології гірничого виробництва. Випуск 2/2014(14). С. 31-43.

11. Ищенко К.С. и др. Особенности разрушения твердых сред взрывом зарядами различной формы // Изв. ВУЗОВ. Горный журнал. 2015. № 5. С. 75-79

12. Пат. на винахід 105730, Україна, F42D 3/04, E21C 37/00. Спосіб вибухового руйнування локально-тріщинуватих анізотропних гірських порід / Іщенко К.С., Коновал С.В., Кратковський І.Л., Коновал В.М. № а 201307372; заявлено 11.06. 2013; опубл. 10.06. 2014. Бюл.№11.

13. Пат. на винахід 110745 Україна, F42 D 3/04. Спосіб моделювання вибухового руйнування гірських порід: / Іщенко К.С., Коновал С.В., Кратковський І.Л., Круковська В. В., Коновал В.М. № а 201408761; заявлено 04.08. 2014; опубл.10.02. 2016. Бюл. №3.

14. Ищенко К.С. Способ создания неоднородного взрывного нагружения твердой среды по длине заряда // Сучасні ресурсоенергозберігаючі технології гірничого виробництва. Випуск №2/2012(10). С.83-88.

15. Глозман И.А. Пьезоэлектрические материалы в электронной технике. М.-Л.: Энергия, 1965. 192с.

16. Барон Л.И. Кусковатость и методы ее измерения. М.: Изд-во АН СССР, 1960. 124 с.

About the authors

Ishchenko Kostiantyn Stepanovych, Candidate of Technical Sciences (Ph.D.), Senior Researcher in the Department of Rock Explosion Mechanics, Institute of Geotechnical Mechanics named N. Poljakov of National Academy of Science of Ukraine (IGTM, NAS of Ukraine), Dnipro, Ukraine, ishchenko_k@i.ua

Konoval Volodymyr Mykolaiovych, Candidate of Technical Sciences (Ph.D.), Associate Professor of the Department of civil and industrial building of the Cherkasy state technological university, Cherkasy, Ukraine

Lohvyna Lyudmyla Oleksandrivna, Master of Science, Junior Researcher in the Department of Rock Explosion Mechanics, Institute of Geotechnical Mechanics named N. Poljakov of National Academy of Science of Ukraine (IGTM, NAS of Ukraine), Dnipro, Ukraine, ishchenko_k@i.ua

Про авторів

Іщенко Костянтин Степанович, кандидат технічних наук, старший науковий співробітник відділу Механіки вибуху гірничих порід, Інститут геотехнічної механіки ім. М.С. Полякова Національної академії наук України (ІГТМ НАН України), Дніпро, Україна, ishchenko_k@i.ua

Коновал Володимир Миколайович, кандидат технічних наук, доцент, кафедра цивільного і промислового будівництва Черкаського державного технологічного університету, Черкаси, Україна.

Логвина Людмила Олександрівна, молодший науковий співробітник відділу Механіки вибуху гірничих порід, Інститут геотехнічної механіки ім. М.С. Полякова Національної академії наук України (ІГТМ НАН України), Дніпро, Україна.

Анотація. Стаття спрямована на розробку способу і методики експериментальних досліджень в полігонних та промислових умовах по вибору й обґрунтуванню раціональної конструкції заряду вибухової речовини для ефективної вибухової підготовки гірничої маси на рудних і нерудних кар'єрах України. Наведено порівняльні результати досліджень з оцінки амплітуди хвилі напружень і характеру дроблення твердого середовища від вибуху заряду вибухової речовини різної конструкції. Встановлено, що під час вибуху зарядів змінного по висоті перерізу напруження в хвилі стискання вище, ніж при вибуху зарядів постійного перерізу. Показано, що загальна маса відбитих вибухом частини моделі зарядом змінного перерізу більше, ніж при вибуху зарядів інших конструкцій: постійного перерізу, змінного діаметру по всій колонці заряду, з розширенням в торці зарядної порожнини та з повітряним проміжком. При цьому збільшується обсяг, як великих фракцій $d_i > 50$ мм, так і діаметр середнього куска. Побудовано залежності розподілу гранулометричного складу зруйнованих вибухом зарядів вибухових речовин різних конструкцій. У промислових умовах проведено обґрунтування місця закладення вибухових свердловин з урахуванням структури породного масиву. Скоригована сітка розташування свердловин на блоці і визначені раціональні параметри вибухових робіт з використанням нового способу відбійки гірських порід складної будови. Запропоновано нову конструкцію комбінованого свердловинного заряду змінного перерізу. Використання запропонованої конструкції комбінованого свердловинного заряду змінного перерізу дає можливість при постійній масі заряду збільшити його довжину і, як наслідок, більш рівномірно розподілити ВР по висоті уступу. При цьому змінюються умови передачі енергії від вибуху заряду ВР, коли в масиві, що руйнується, формується різноградієнтне і різноспрямоване поле напружень. Проведено промислові випробування і виконана оцінка ефективності запропонованого способу вибухової відбійки локально-тріщинуватих гірських порід на родовищах рудних і нерудних корисних копалин. Дано рекомендації щодо їх застосування.

Ключові слова: гірничий масив, вибухова речовина, конструкція заряду, гранулометричний склад.

Аннотация. Статья направлена на разработку способа и методики экспериментальных исследований в полигонных и промышленных условиях по выбору и обоснованию рациональной конструкции заряда

взрывчатого вещества для эффективной взрывной подготовки горной массы на рудных и нерудных карьерах Украины. Приведены сравнительные результаты исследований по оценке амплитуды волны напряжений и характера дробления твердой среды от взрыва заряда взрывчатого вещества различной конструкции. Установлено, что при взрыве зарядов переменного по высоте сечения напряжения в волне сжатия выше, чем при взрыве зарядов постоянного сечения. Показано, что общая масса отбитых взрывом части модели зарядом переменного сечения больше, чем при взрыве зарядов других конструкций: постоянного сечения, переменного диаметра по всей колонке заряда, с котловым расширением в торце и с воздушным промежутком. При этом увеличивается объем, как крупных фракций $d_i > 50$ мм, так и диаметр среднего куска. Построены зависимости распределения гранулометрического состава разрушенных взрывом зарядов взрывчатых веществ различных конструкций. В промышленных условиях проведено обоснование места заложения взрывных скважин с учетом структуры породного массива. Скорректирована сетка расположения скважин на блоке и определены рациональные параметров взрывных работ с использованием нового способа отбойки горных пород сложной структуры. Предложена новая конструкция комбинированного скважинного заряда переменного сечения. Использование предложенной конструкции комбинированного скважинного заряда переменного сечения дает возможность при постоянной массе заряда увеличить его длину и, как следствие, более равномерно распределить ВВ по высоте уступа. При этом изменяются условия передачи энергии от взрыва заряда ВВ, когда в разрушаемом массиве формируется разноградиентное и разнонаправленное поле напряжений. Проведены промышленные испытания и выполнена оценка эффективности предложенного способа взрывной отбойки локально-трещиноватых горных пород на месторождениях рудных и нерудных полезных ископаемых. Даны рекомендации по их применению.

Ключевые слова: горный массив, взрывчатое вещество, конструкция заряда, гранулометрический состав.

Стаття надійшла до редакції 03.07. 2019

Рекомендовано до друку докт. техн. наук К.В. Бабій