

V.V. Lysko, *cand. phys.–math. Sciences*^{1,2}

P.F. Tudoroi^{1,2}

¹Institute of Thermoelectricity of the NAS and MES of Ukraine,

1, Nauky str, Chernivtsi, 58029, Ukraine;

e-mail: anatych@gmail.com

²Yu.Fedkovych Chernivtsi National University,

2, Kotsiubynskyi str., Chernivtsi, 58000, Ukraine

COMPUTER SIMULATION OF EXTRUSION PROCESS OF Bi_2Te_3 BASED TAPE THERMOELECTRIC MATERIALS

As long as in the process of hot extrusion of thermoelectric materials in the form of tape structures, billets of material are deformed under practically perfect plastic conditions, when optimizing equipment to obtain such materials, viscous fluid approximation may be used. This allows a computer simulation of the extrusion process using the hydrodynamic theory, where material is regarded as a fluid with a very high viscosity, which is a function of velocity and temperature. This paper presents the results of an object-oriented computer simulation of the process of hot extrusion of Bi_2Te_3 based thermoelectric material. Cases of producing thermoelectric materials in the form of tape structures for various matrix configurations are considered. The distributions of temperature and flow velocity of material in the matrix are obtained, as well as material velocity fields at the exit from the matrix which directly affect the structure of resulting material and its thermoelectric properties. Bibl. 6, Fig. 5, Tabl. 1.

Key words: simulation, extrusion, tape thermoelectric material.

Introduction

At present, alongside with single-crystal *Bi-Te* based thermoelectric materials, extruded materials are also used for the production of thermoelectric products. The main advantage of the extrusion method is associated with improved material strength. Moreover, their thermoelectric properties may remain at the level of properties obtained by crystallization from the melt.

Generally, extruded thermoelectric materials are made in the form of cylindrical samples up to 25-30 mm in diameter. The use of extruded thermoelectric materials in the form of tape structures for the production of standard modules can reduce their cost by significantly reducing material losses.

At the same time, when creating equipment for producing extruded materials in the form of tape structures, the design and optimization of its structure are necessary.

One of effective ways to study the effect of conditions for producing material on its structure is mathematical simulation of the extrusion process in combination with the experimental results of structural studies [4, 5].

The purpose of this work is to create a computer model of the hot extrusion process of Bi_2Te_3 based thermoelectric material to study the distributions of temperature and material flow velocity in a rectangular-shaped matrix, which can be the basis for optimization of equipment for producing extruded thermoelectric material.

Physical, mathematical and computer extrusion models

To build a computer model of the hot extrusion process of tape thermoelectric material, the viscous fluid approximation and the application package of object-oriented simulation Comsol Multiphysics were

used [5]. The model employs the hydrodynamic theory, where a material is regarded as a fluid of high viscosity which is a function of velocity and temperature. The internal friction of the moving layers of material serves as a heat source. The developed computer model allows one to determine mechanical stress distribution in the matrix due to external pressure and thermal loads.

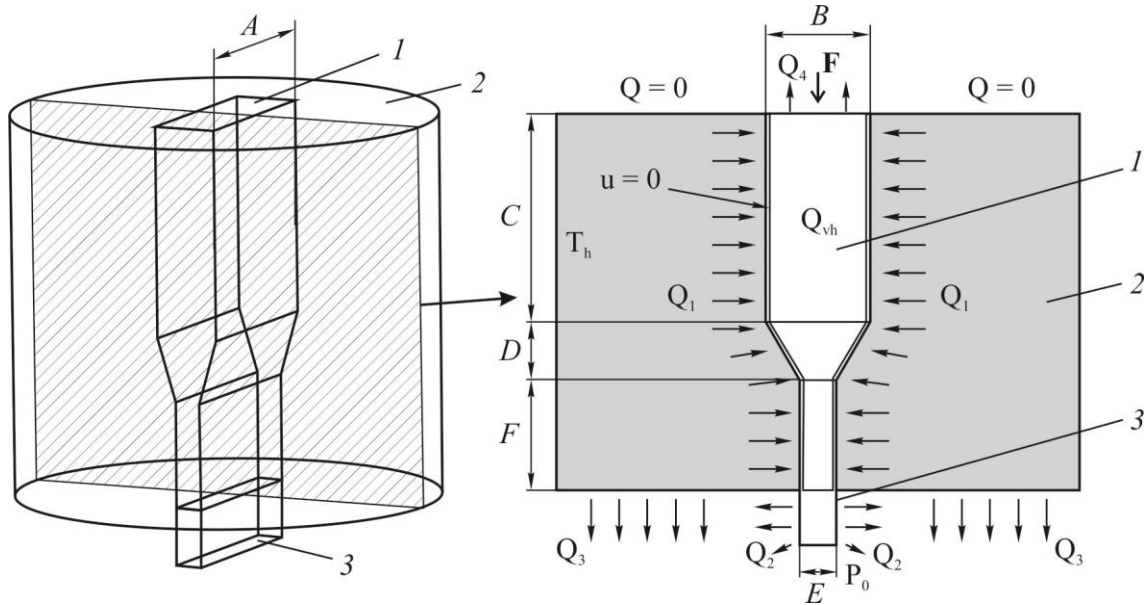


Fig. 1. Physical model of the extrusion process of tape thermoelectric material.

1 – thermoelectric material billet; 2 – matrix; 3 – tape thermoelectric material after leaving the matrix.

The employed physical model of the extrusion process of tape material is shown in Fig. 1. The model considers a stationary case of flowing through matrix 2 of material billet 1 obtained by cold pressing. The geometrical dimensions: A , B and C are width, thickness and length of matrix inlet (thermoelectric material billet); D is the length of the beveled part of the matrix; E , F are the thickness and length of matrix outlet whose width is A .

To find the distributions of velocities and temperatures, one should solve the following system of equations [5]

$$\rho(\mathbf{u} \cdot \nabla \mathbf{u}) = \nabla \left[-p\mathbf{I} + \eta(\nabla \mathbf{u} + (\nabla \mathbf{u})^T) - \frac{2}{3}\eta(\nabla \cdot \mathbf{u})\mathbf{I} \right] + \mathbf{F};$$

$$\nabla \cdot (\rho \mathbf{u}) = 0; \quad (1)$$

$$\rho C_p \mathbf{u} \cdot \nabla T = \nabla \cdot (\kappa \nabla T) + Q_{vh};$$

$$Q_{vh} = \eta(\nabla \mathbf{u} + (\nabla \mathbf{u})^T) - \frac{2}{3}(\nabla \cdot \mathbf{u})\mathbf{I} : \nabla \mathbf{u}$$

with the corresponding boundary conditions:

- thermostated lateral surface of matrix: $T = T_h$,
- convective heat exchange of the lateral surface of sample after leaving the matrix:

$$-\mathbf{n} \cdot (-\kappa \nabla T) = h_2(T - T_0),$$

- heat removal by structural members, not shown in Fig.1, from lower matrix part and upper part of

thermoelectric material billet:

$$-\mathbf{n} \cdot (-\kappa \nabla T) = h_3(T - T_0), \quad -\mathbf{n} \cdot (-\kappa \nabla T) = h_4(T - T_0),$$

- thermal insulation of upper matrix part:

$$-\mathbf{n} \cdot (-\kappa \nabla T) = 0,$$

- input pressure on the billet: $p = p_1$,
- atmospheric pressure at sample exit from the matrix: $p = p_0 = 1 \text{ atm.}$,
- equality to zero of fluid velocity at the boundary of contact with the matrix $\mathbf{u} = 0$,
- equality to zero of fluid velocity component perpendicular to the lateral side of the sample after leaving the matrix $\mathbf{u}_n = 0$,

where: \mathbf{u} is velocity field, ρ is density, p is pressure, η is dynamic viscosity factor, κ is thermal conductivity, \mathbf{F} is vector field of forces, Q_{vh} is volumetric heat source due to internal friction, \mathbf{I} is unit matrix, $h_2 - h_4$ are heat exchange coefficients, T_0 is ambient temperature.

Heating due to internal friction and contact thermal resistance at the boundary of contact between material and matrix are taken into account. The properties of thermoelectric material and matrix material used in simulation are given in Table 1.

Table 1.

Material properties

1.	Thermoelectric material	Thermal conductivity, W/(m*K)	4
		Density, kg/ m ³	7600
		Heat capacity, J/(kg*K)	150
2.	Steel (matrix)	Thermal conductivity, W/(m*K)	24.3
		Density, kg/ m ³	7850
		Heat capacity, J/(kg*K)	500

Equivalent viscosity of test fluid and other parameters necessary for computer model are calculated by the formulae given in [6].

Fig. 2 shows a mesh of finite element method which is used in Comsol Multiphysics for matrix configuration under study.

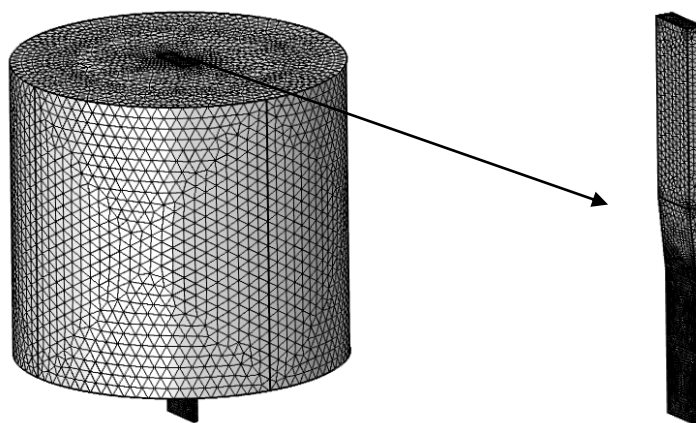


Fig. 2. Finite element method mesh built for matrix configuration shown in Fig. 1.

Computer simulation results

Typical velocity fields and temperature distributions in the matrix and thermoelectric material obtained by computer simulation are shown in Figs. 3, 4. The velocity in mm/min and temperature in degrees Celsius are marked in colour.

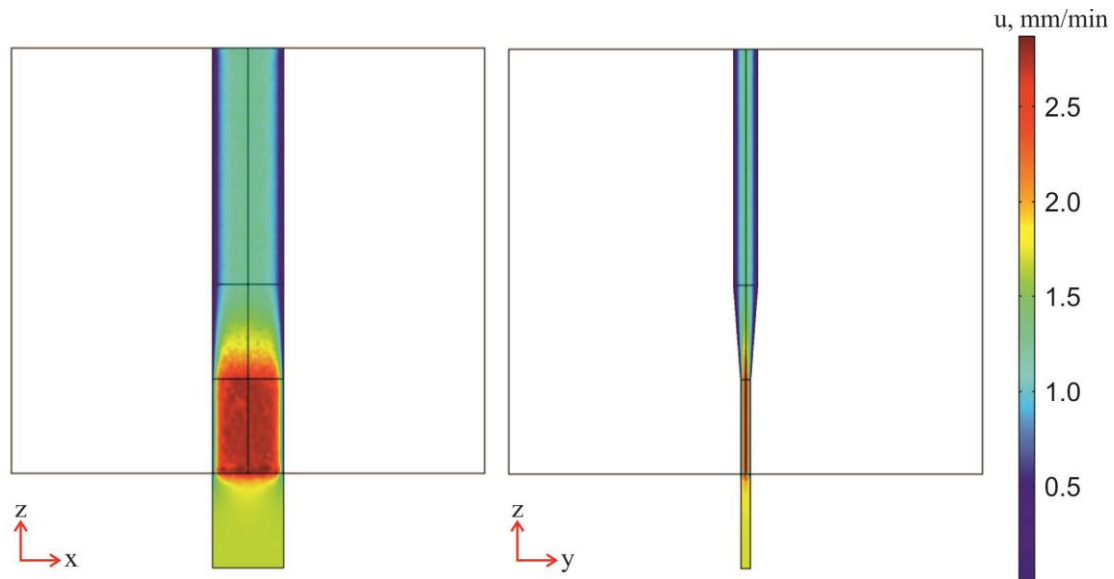


Fig. 3. Velocity field of thermoelectric material inside the matrix and after leaving it (for matrix with dimensions: $A = 15\text{ mm}$; $B = 5\text{ mm}$; $C = 50\text{ mm}$; $D = 20\text{ mm}$; $E = 2\text{ mm}$; $F = 20\text{ mm}$).

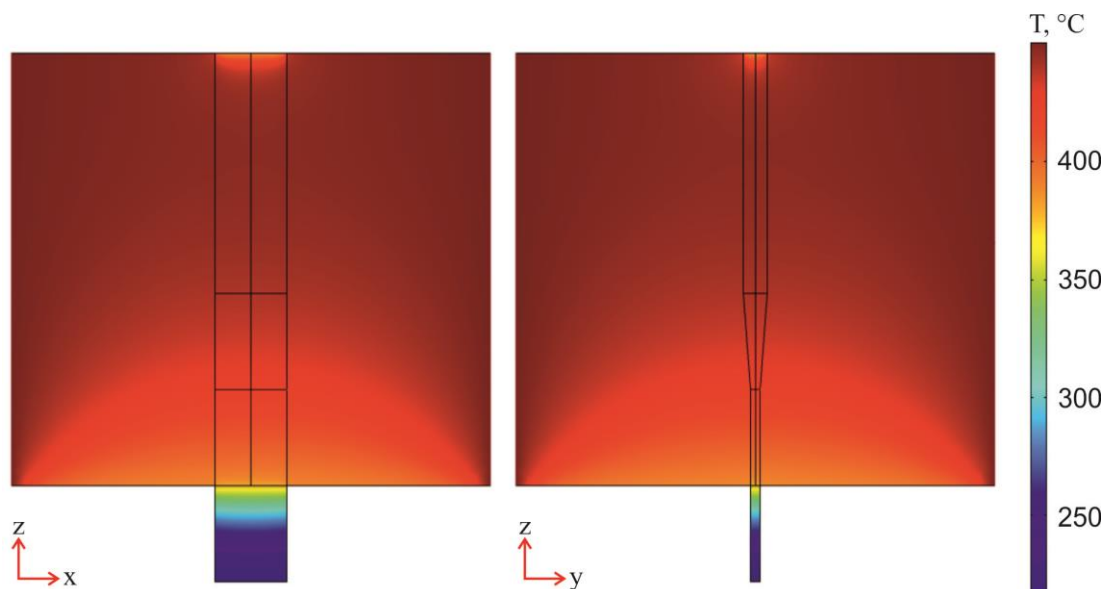


Fig. 3. Temperature distributions in thermoelectric material and matrix (for matrix with dimensions: $A = 15\text{ mm}$; $B = 5\text{ mm}$; $C = 50\text{ mm}$; $D = 20\text{ mm}$; $E = 2\text{ mm}$; $F = 20\text{ mm}$).

Fig. 4 shows velocity fields in thermoelectric material at the exit from matrix obtained for various matrix configurations – its inlet and outlet dimensions (indicated in the figure in mm).

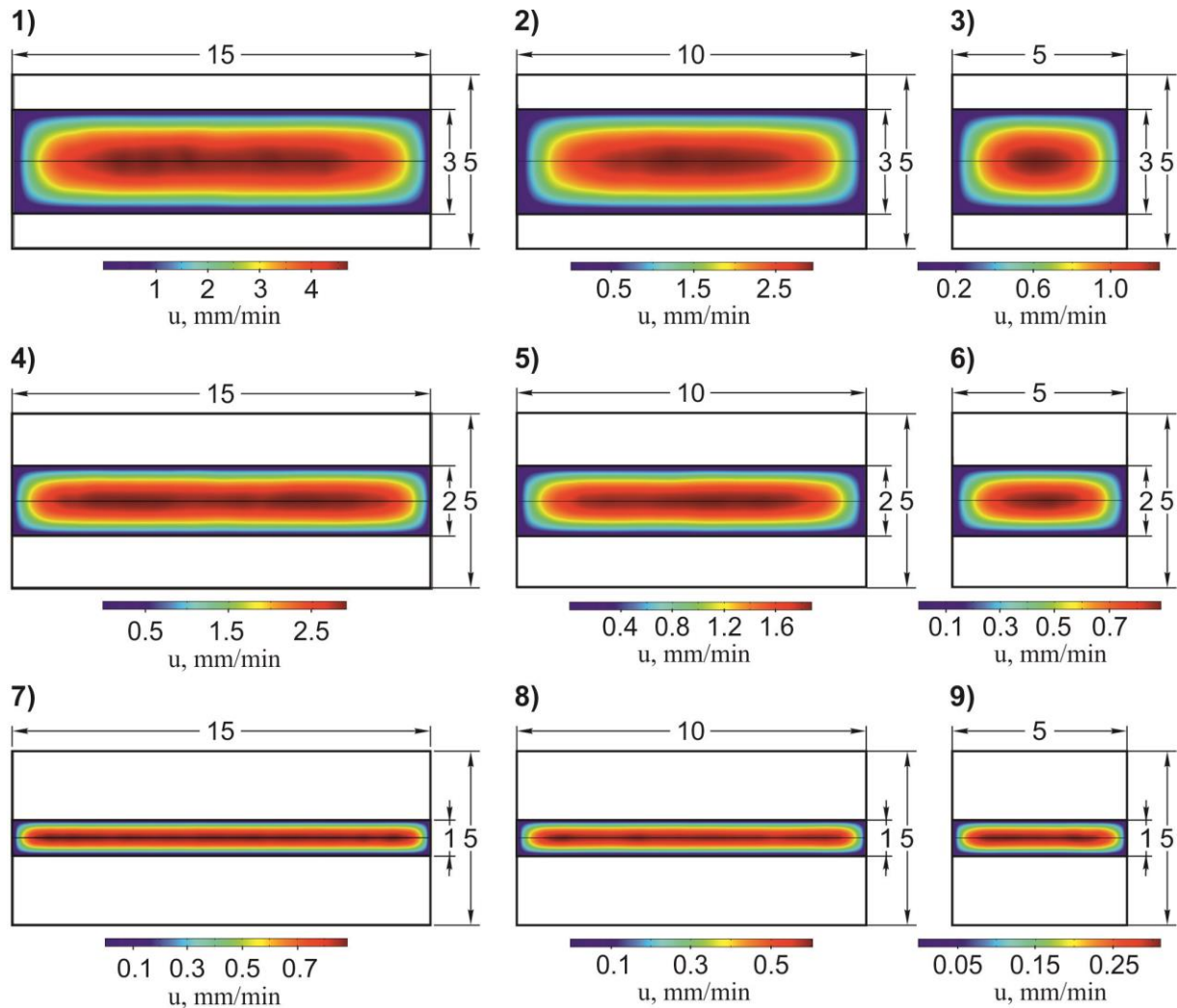


Fig. 4. Velocity fields in thermoelectric material at the exit from matrix obtained for various matrix configurations.

1 – $A = 15$ mm, $B = 5$ mm, $E = 3$ mm, 2 – $A = 10$ mm, $B = 5$ mm, $E = 3$ mm,;
 3 – $A = 5$ mm, $B = 5$ mm, $E = 3$ mm,; 4 – $A = 15$ mm, $B = 5$ mm, $E = 2$ mm,;
 5 – $A = 10$ mm, $B = 5$ mm, $E = 2$ mm,; 6 – $A = 5$ mm, $B = 5$ mm, $E = 2$ mm,;
 7 – $A = 15$ mm, $B = 5$ mm, $E = 1$ mm; 8 – $A = 10$ mm, $B = 5$ mm, $E = 1$ mm;
 9 – $A = 5$ mm, $B = 5$ mm, $E = 1$ mm.

Fig. 5 shows velocity distributions along the width of the output tape thermoelectric material (1 mm after leaving the matrix). In the percentage ratio, the smallest velocity spread is typical for cases with the largest thickness ratio of matrix inlet and outlet.

Since extrusion conditions, i.e. die shape, temperature and strain rate, etc., directly affect the final structure and properties of the extruded material, the information obtained is useful for optimizing the design of equipment for extrusion of Bi-Te based tape materials. The computer model developed can also, if necessary, reproduce these results for other materials and extrusion conditions.

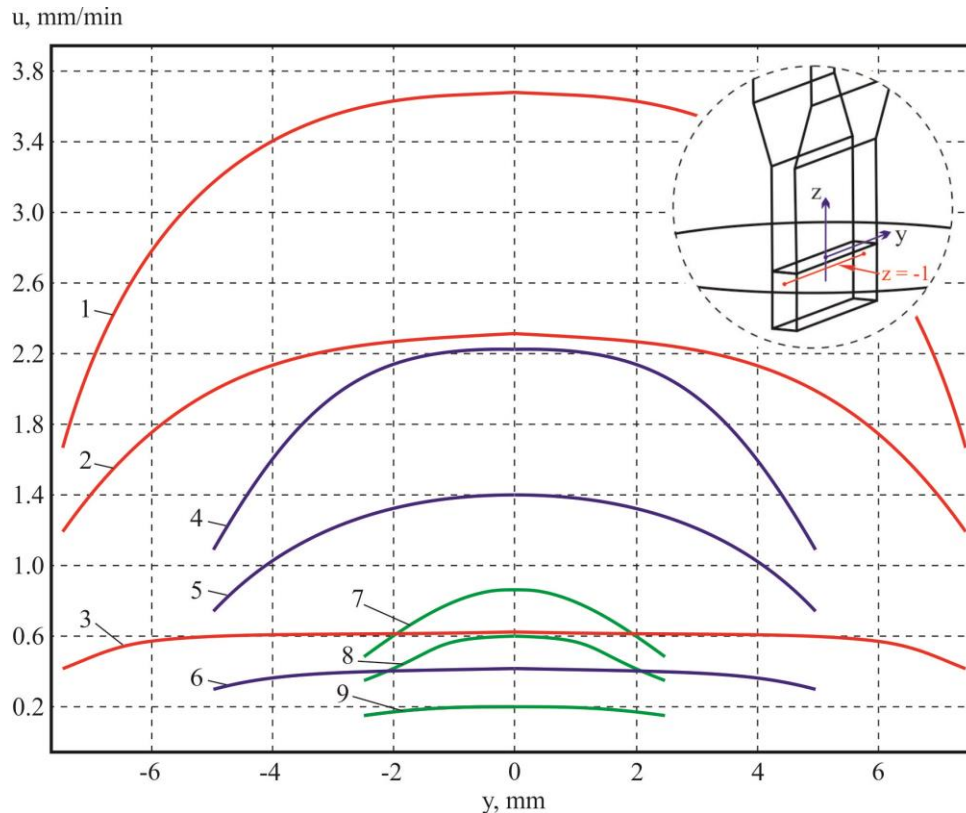


Fig. 5. Velocity distributions along the width of the output tape thermoelectric material (1 mm after leaving the matrix) for various matrix geometry: 1 – $A = 15$ mm, $B = 5$ mm, $E = 3$ mm; 2 – $A = 15$ mm, $B = 5$ mm, $E = 2$ mm; 3 – $A = 15$ mm, $B = 5$ mm, $E = 1$ mm; 4 – $A = 10$ mm, $B = 5$ mm, $E = 3$ mm; 5 – $A = 10$ mm, $B = 5$ mm, $E = 2$ mm; 6 – $A = 10$ mm, $B = 5$ mm, $E = 1$ mm; 7 – $A = 5$ mm, $B = 5$ mm, $E = 3$ mm; 8 – $A = 5$ mm, $B = 5$ mm, $E = 2$ mm; 9 – $A = 5$ mm, $B = 5$ mm, $E = 1$ mm.

Conclusions

1. A computer model of the hot extrusion process of Bi_2Te_3 based thermoelectric material was created which can be used to study the distributions of temperature and material flow velocity in the matrix, as well as mechanical stress distribution in the matrix due to external pressure and thermal loads.
2. The temperature and material flow velocity distributions in the matrix were obtained depending on matrix configuration for the case of thermoelectric material extrusion in the form of tape structures.
3. Dependences of velocity distribution of tape thermoelectric material after leaving the matrix were obtained versus size ratio of matrix inlet and outlet. Conditions for approximation of this distribution to the one-dimensional were determined.

References

1. Bulat L.P. (2002). *Thermoelectric cooling*. St.-Petersburg: St.-Petersburg State Academy of Cool and Food Technologies.
2. Sabo E.P. (2006). Technology of chalcogenide thermoelements. Physical fundamentals. *J. Thermoelectricity*, 1, 45-66.
3. *Patent of RF 2475333 C1* (2011). Sorokin A.I., Parkhomenko Yu.N., Osvenskiy V.B., Lavrentiev M.G., Karataiev V.V., Drabkin I.A. Extrusion process of thermoelectric material based on bismuth and antimony chalcogenides [in Russian]. .

4. Lavrentiev M.G., Osvenskyi V.B., Mezhennyi M.V., Prostomolotov A.I., Bublik V.T., Tabachkova N.Yu. (2012). Teoreticheskoie i eksperimentalnoie issledovaniie formirovaniia struktyry termoelektricheskogo materiala na osnove tverdykh rastvorov $(\text{Bi}, \text{Sb})_2\text{Te}_3$ poluchennogo metodom goriachei ekstruzii [Theoretical and experimental research on the formation of structure of thermoelectric material based on $(\text{Bi}, \text{Sb})_2\text{Te}_3$ solid solutions obtained by hot extrusion method. XIII Interstate Workshop "Thermoelectrics and Their Applications" (St.Petersburg, Russia, 2012).
5. Lysko V.V. (2019). Viscous fluid approximation when simulating Bi_2Te_3 based thermoelectric material extrusion process.
6. Fluid-structure interaction in aluminum extrusion (2008). *Structural Mechanics Module Model Library*. COMSOL AB, p. 301-316.

Submitted 24.04.2019

Лисько В.В. канд. фіз.-мат. наук^{1,2}
Тудорой П.О.

¹Інститут термоелектрики НАН і МОН України,
вул. Науки, 1, Чернівці, 58029, Україна, e-mail: anatych@gmail.com;

²Чернівецький національний університет імені Юрія Федьковича,
вул. Коцюбинського 2, Чернівці, 58012, Україна

КОМП'ЮТЕРНЕ МОДЕЛЮВАННЯ ПРОЦЕСУ ЕКСТРУЗІЇ СТРІЧКОВИХ ТЕРМОЕЛЕКТРИЧНИХ МАТЕРІАЛІВ НА ОСНОВІ Bi_2Te_3

Оскільки в процесі гарячої екструзії термоелектричних матеріалів у вигляді стрічкових структур заготовки матеріалу деформуються в практично ідеальних пластичних умовах, при оптимізації обладнання для отримання таких матеріалів може бути використано наближення в'язкої рідини. Це дозволяє проводити комп'ютерне моделювання процесу екструзії з використанням теорії гідродинаміки, де матеріал розглядається як рідина з дуже високою в'язкістю, яка залежить від швидкості і температури. У роботі наведено результати об'єктно-орієнтованого комп'ютерного моделювання процесу гарячої екструзії термоелектричного матеріалу на основі Bi_2Te_3 . Розглянуті випадки отримання термоелектричних матеріалів у вигляді стрічкових структур для різних конфігурацій матриці. Отримано розподіли температури та швидкості протікання матеріалу у матриці, а також поля швидкостей матеріалу на виході з матриці, які безпосередньо впливають на структуру отриманого матеріалу та його термоелектричні властивості. Бібл. 6, рис. 5, табл. 1.

Ключові слова: моделювання, екструзія, стрічковий термоелектричний матеріал.

Лыско В.В., канд. физ – мат. наук,^{1,2}
Тудорой П.Ф.^{1,2}

¹Институт термоэлектричества НАН и МОН Украины,
вул. Науки, 1, Черновцы, 58029, Украина;

²Чернивецкий национальный университет имени. Юрия Федьковича,
ул. Коцюбинского 2, Черновцы, 58000, Украина, e-mail: anatysh@gmail.com

КОМПЬЮТЕРНОЕ МОДЕЛИРОВАНИЕ ПРОЦЕССА ЭКСТРУЗИИ ЛЕНТОЧНЫХ ТЕРМОЭЛЕКТРИЧЕСКИХ МАТЕРИАЛОВ НА ОСНОВЕ Bi₂Te₃

Поскольку в процессе горячей экструзии термоэлектрических материалов в виде ленточных структур заготовки материала деформируются в практически идеально пластических условиях, при оптимизации оборудования для получения таких материалов может быть использовано приближение вязкой жидкости. Это позволяет проводить компьютерное моделирование процесса экструзии с использованием теории гидродинамики, где материал рассматривается как жидкость с очень высокой вязкостью, которая зависит от скорости и температуры. В работе приведены результаты объектно-ориентированного компьютерного моделирования процесса горячей экструзии термоэлектрического материала на основе Bi₂Te₃. Рассмотрены случаи получения термоэлектрических материалов в виде ленточных структур для разных конфигураций матрицы. Получены распределения температуры и скорости протекания материала в матрицы, а также поля скоростей материала на выходе из матрицы, которые непосредственно влияют на структуру полученного материала и его термоэлектрические свойства. Библ. 6, рис. 5, табл. 1.

Ключевые слова: моделирование, экструзия, ленточный термоэлектрический материал.

References

1. Bulat L.P. (2002). *Thermoelectric cooling*. St.-Petersburg: St.-Petersburg State Academy of Cool and Food Technologies.
2. Sabo E.P. (2006). Technology of chalcogenide thermoelements. Physical fundamentals. *J. Thermoelectricity*, 1, 45-66.
3. *Patent of RF 2475333 C1* (2011). Sorokin A.I., Parkhomenko Yu.N., Osvenskiy V.B., Lavrentiev M.G., Karataiev V.V., Drabkin I.A. Extrusion process of thermoelectric material based on bismuth and antimony chalcogenides [in Russian]. .
4. Lavrentiev M.G., Osvenskiy V.B., Mezhenyi M.V., Prostomolotov A.I., Bublik V.T., Tabachkova N.Yu. (2012). Teoreticheskoie i eksperimentalnoie issledovaniie formirovaniia struktyry termoelektricheskogo materiala na osnove tverdykh rastvorov (Bi, Sb)₂Te₃ poluchennogo metodom goriachei ekstruzii [Theoretical and experimental research on the formation of structure of thermoelectric material based on (Bi, Sb)₂Te₃ solid solutions obtained by hot extrusion method. XIII Interstate Workshop "Thermoelectrics and Their Applications" (St.Petersburg, Russia, 2012).
5. Lysko V.V. (2019). Viscous fluid approximation when simulating Bi₂Te₃ based thermoelectric material extrusion process.
6. Fluid-structure interaction in aluminum extrusion (2008). *Structural Mechanics Module Model Library*. COMSOL AB, p. 301-316.

Submitted 24.04.2019